



New Zealand's Worst Weed Problem

Duane Peltzer
Rowan Sprague



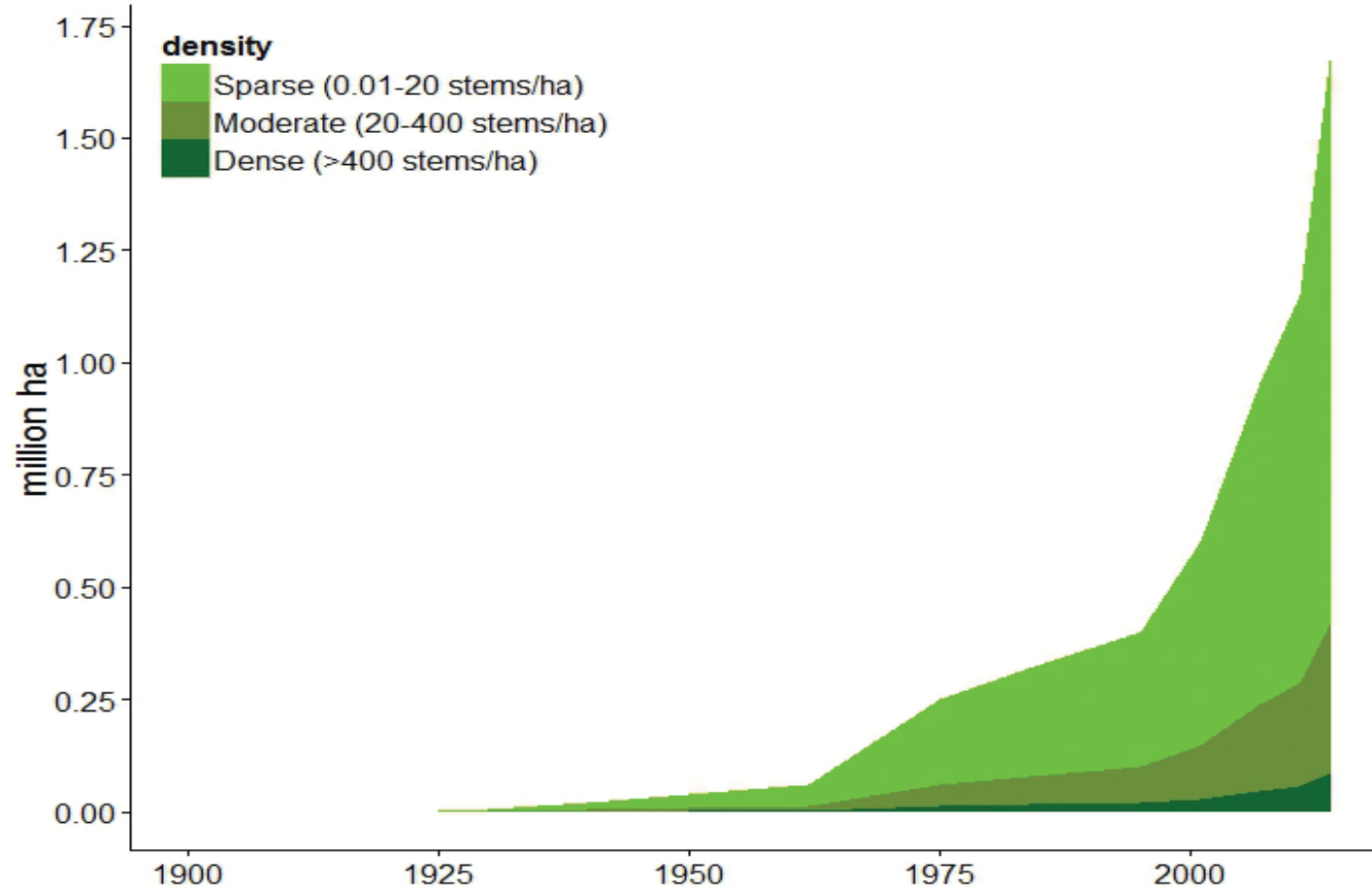
Jollies Pass, Hanmer Springs



Community groups and regional councils have been controlling wilding conifers for decades



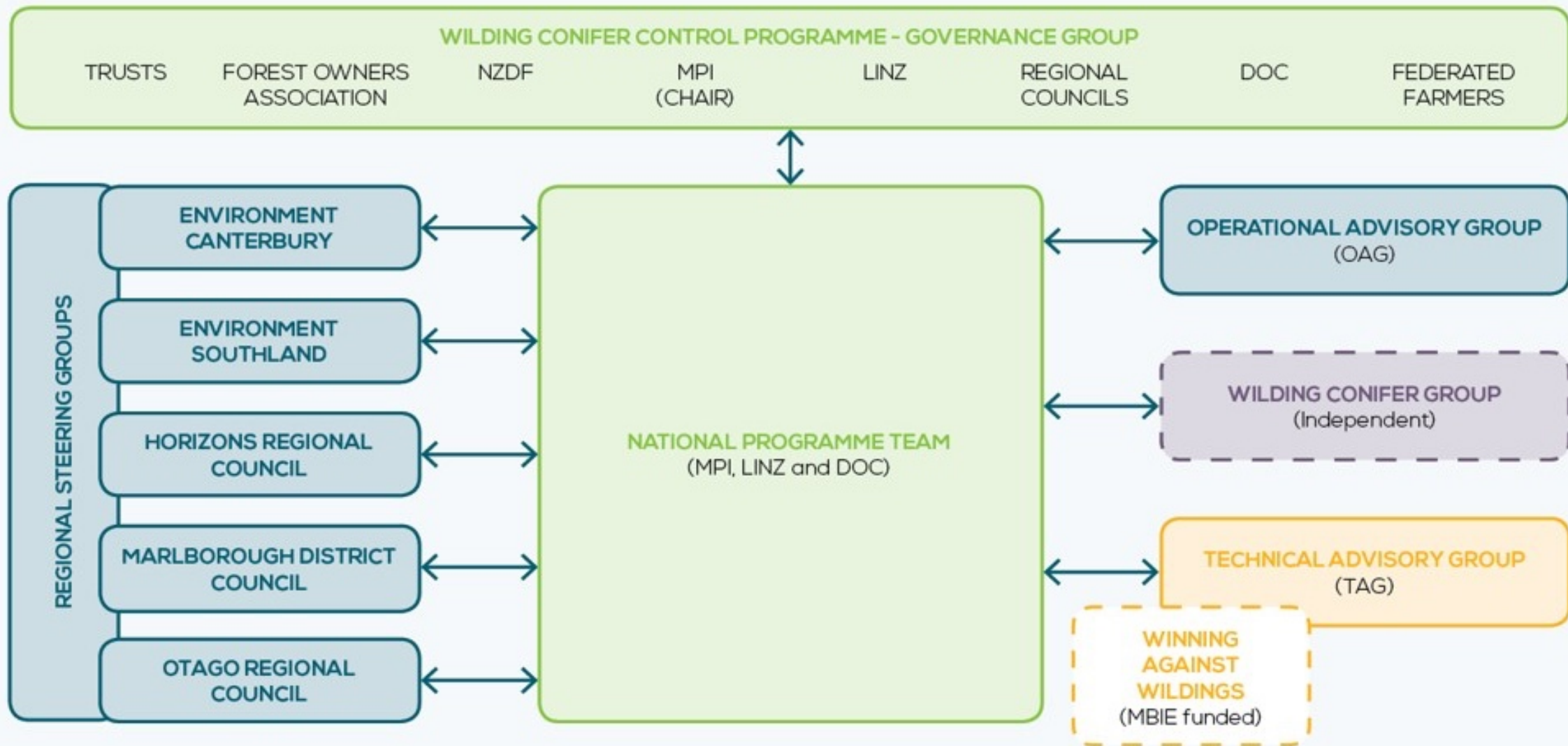
Status quo management has not successfully controlled the increase in wilding conifers nationally



Without management the area invaded could be 7 million ha, or 25% of NZ's total land area

WILDING CONIFER CONTROL PROGRAMME - STRUCTURE

NEW ZEALAND WILDING CONIFER MANAGEMENT STRATEGY 2015-30

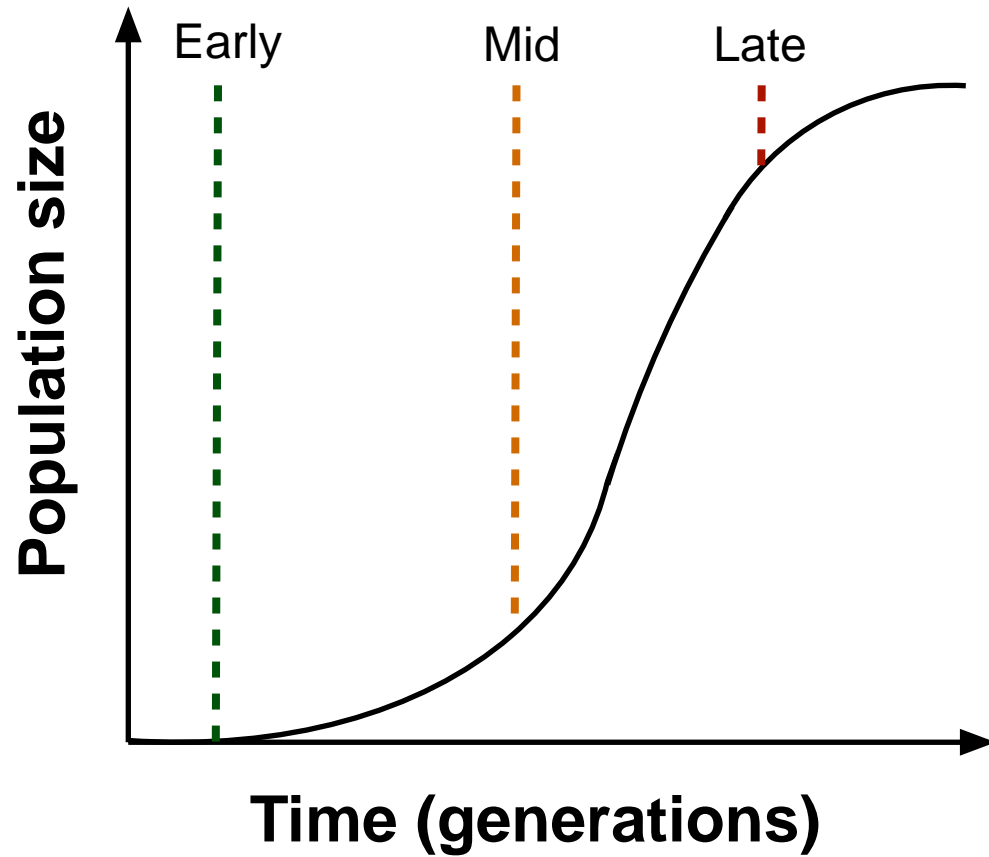


Wilding conifers are a major invader both in NZ and internationally

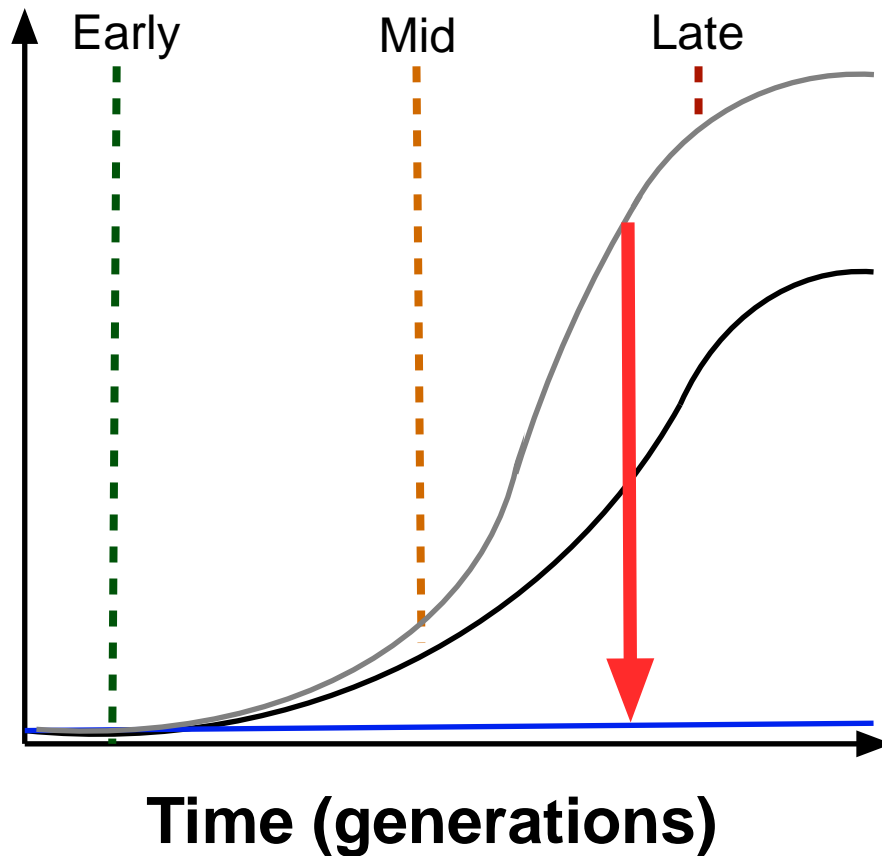


The 'Winning against wildings' programme and aligned work seeks to 'flatten the curve' for wildings in NZ

Stage of invasion



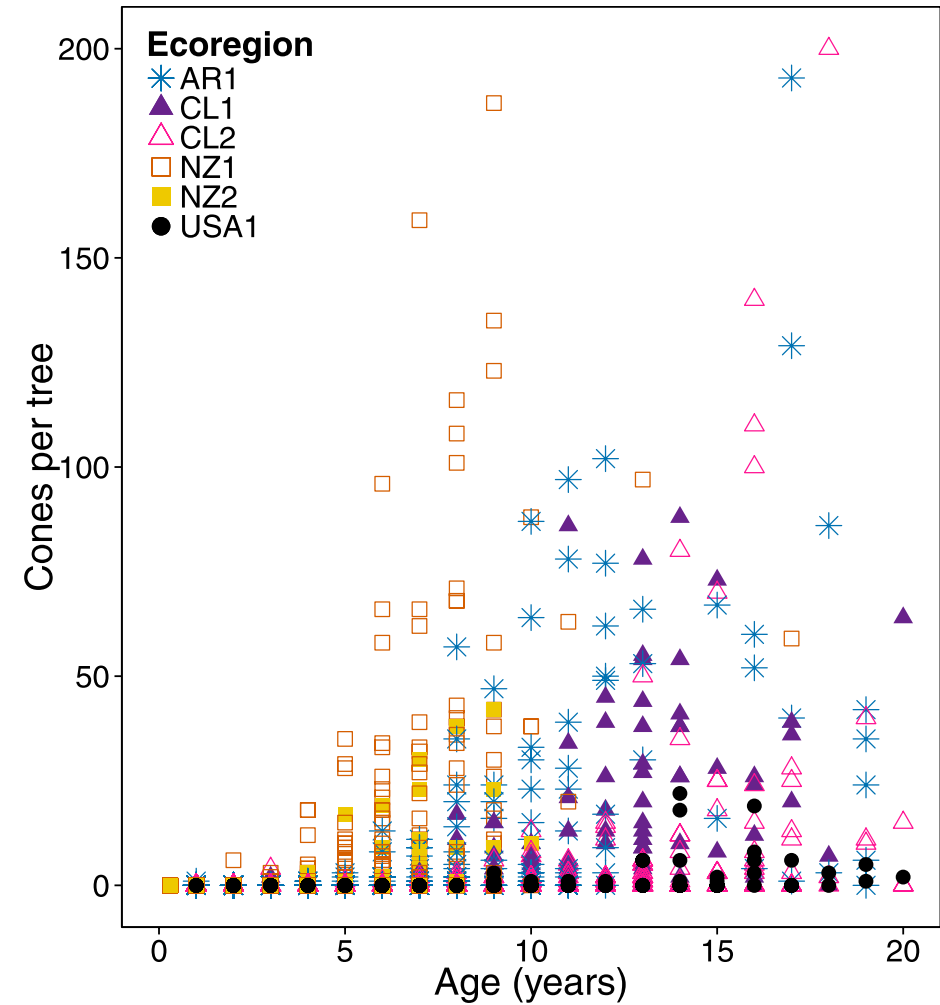
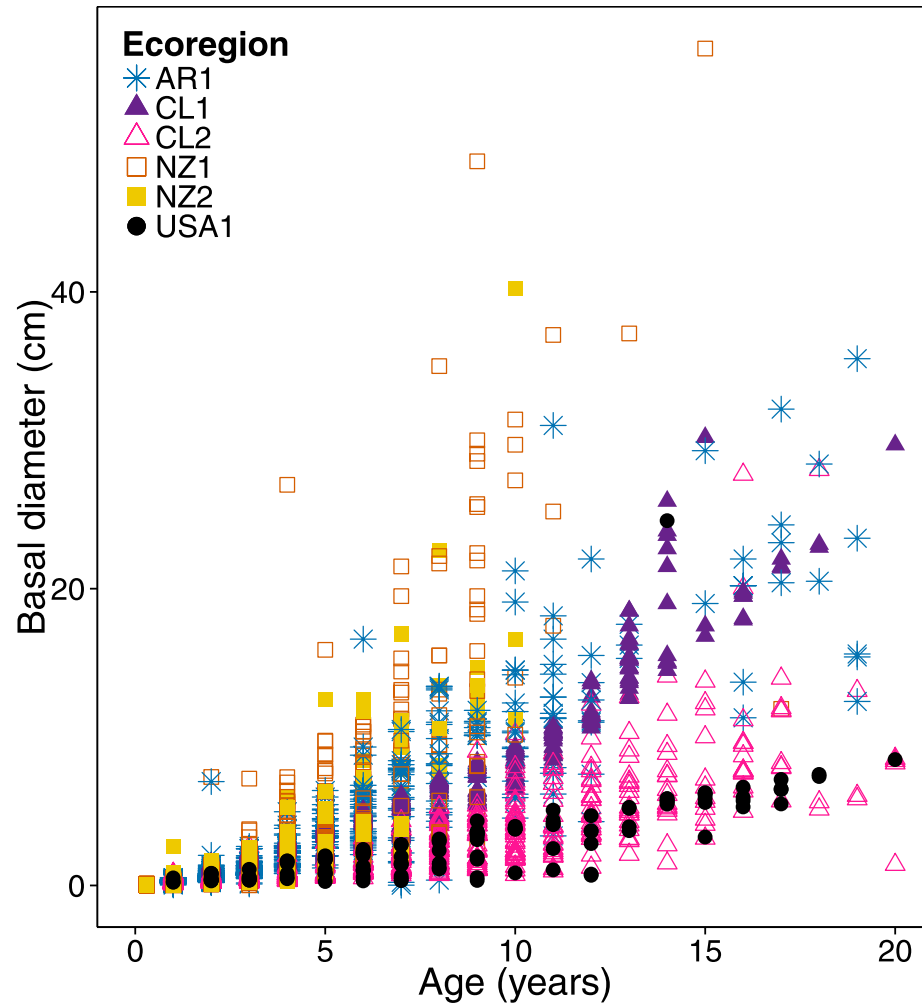
Stage of invasion

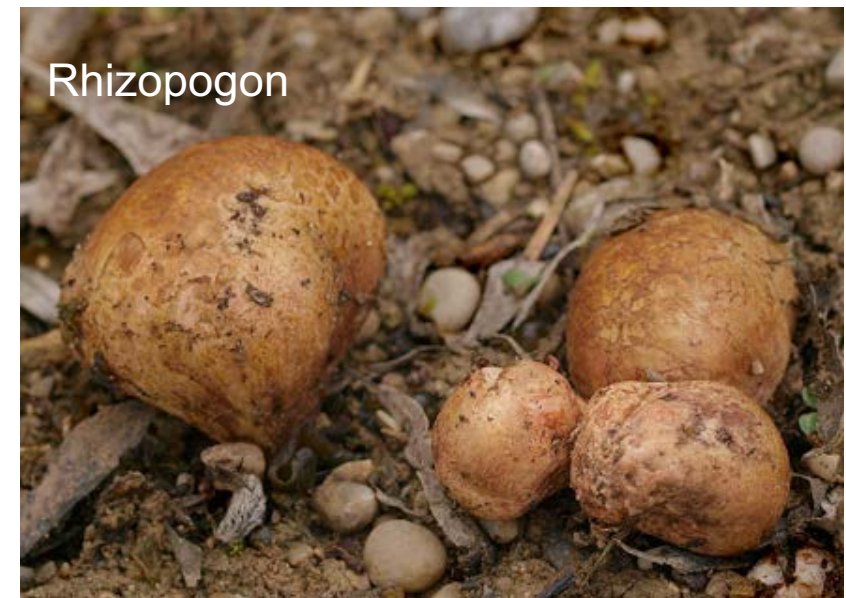
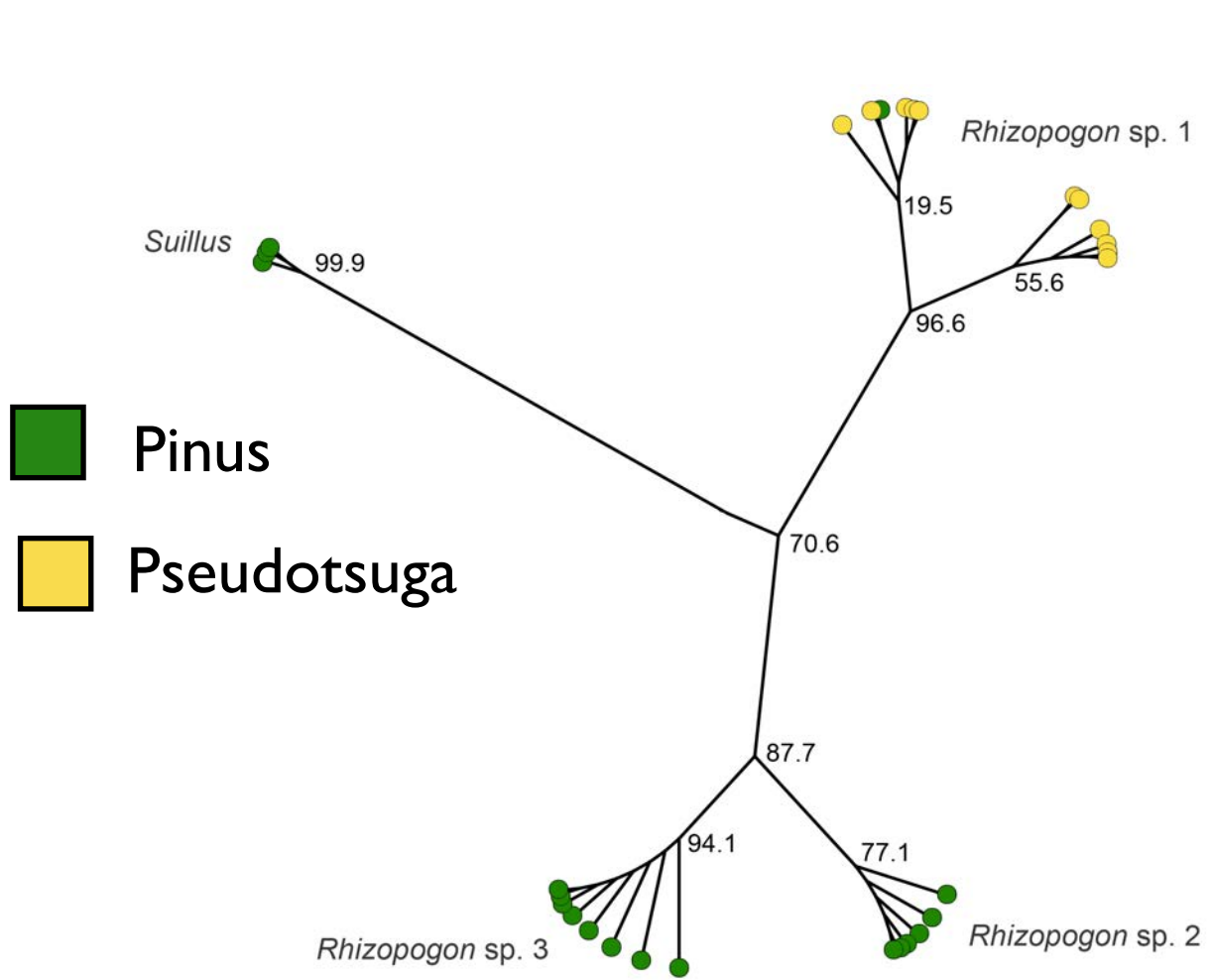






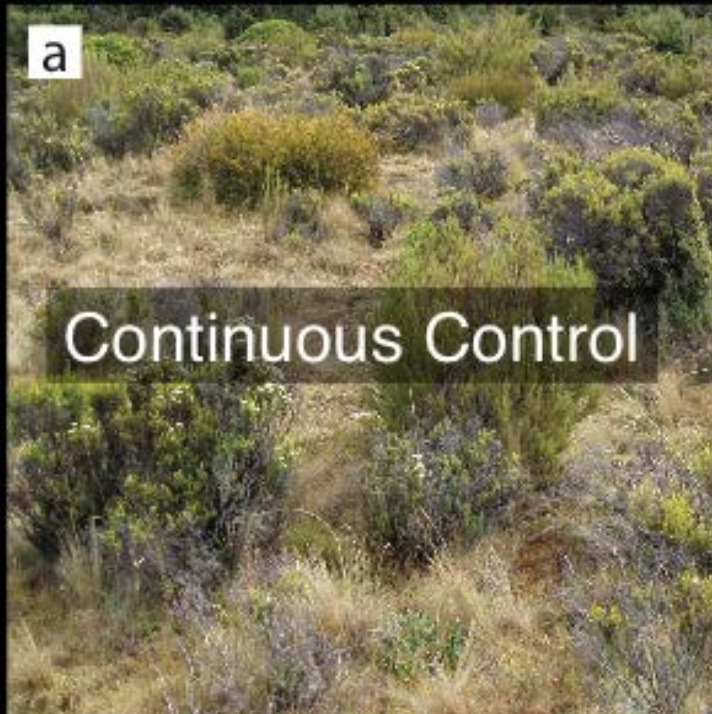
Lodgepole pine in NZ grows faster, produces more seeds for a given age, and has greater impacts on plant diversity compared to other regions





a

Continuous Control



b

Intermediate Control



c

Intact pine



d

Late Removal

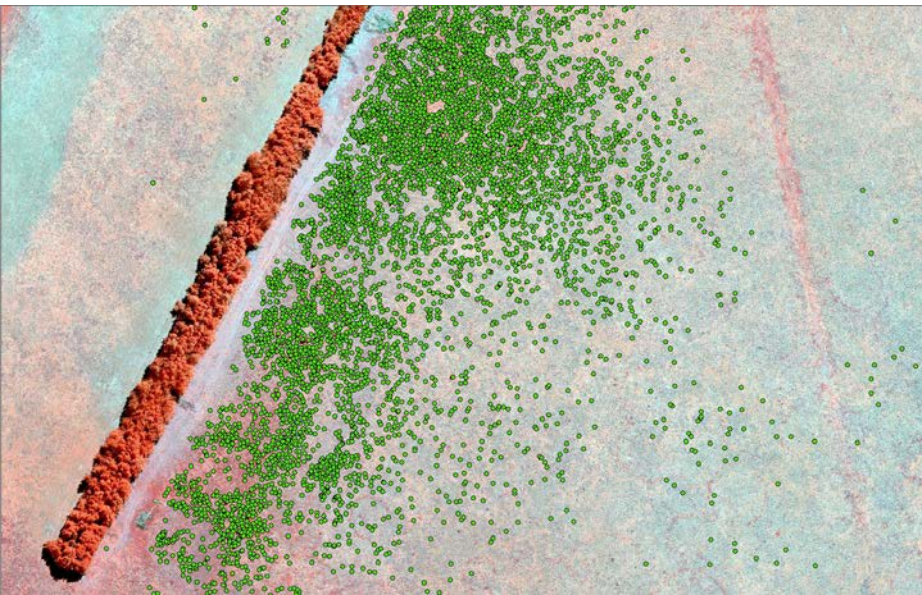


What impacts and legacies are wildings having?
What benefits result from containing or controlling wildings?



What is being done to improve the management and prevention of wilding conifer invasions?

Detection



Control



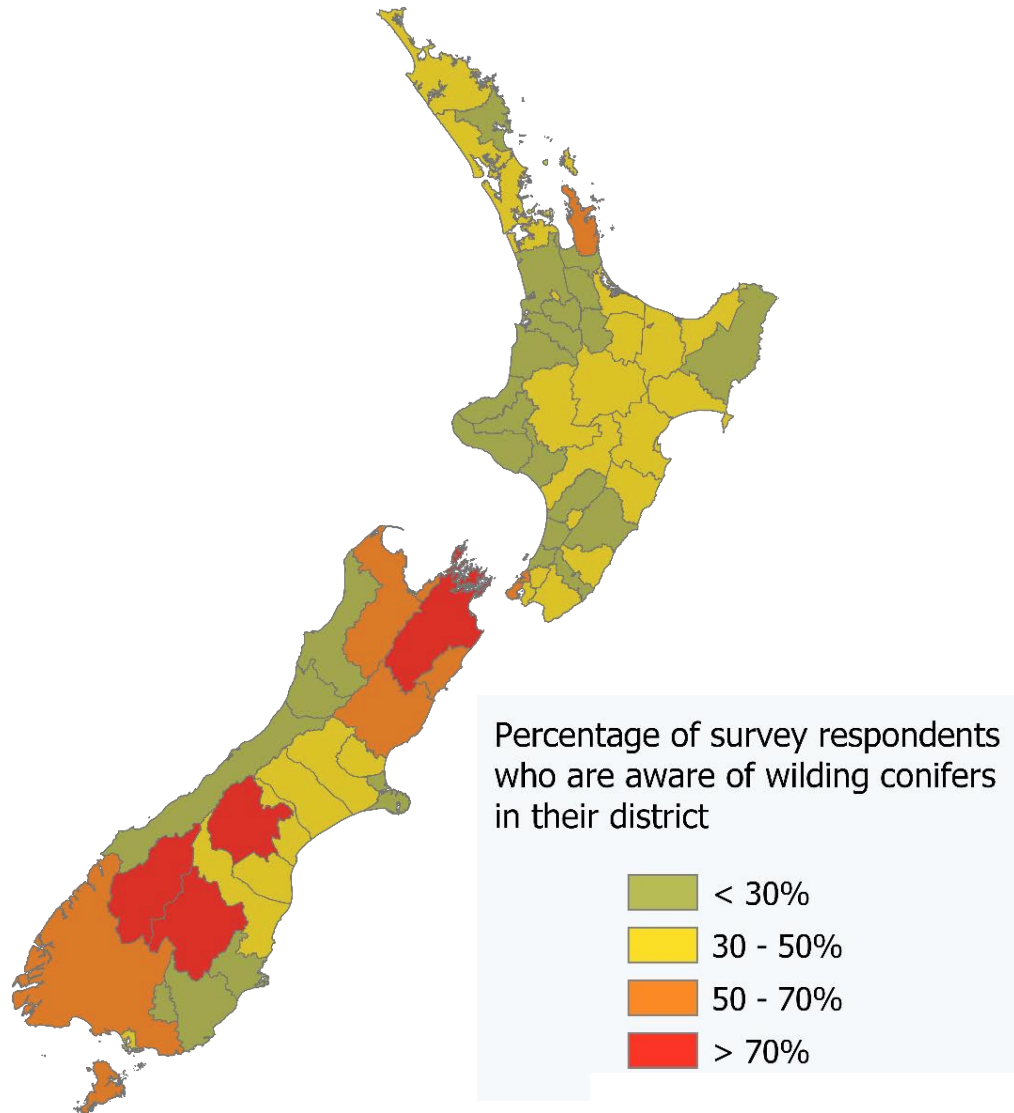
Prevention



How can we better manage landscape-scale invaders?



Awareness of wildings varies among regions



Growing view that wildings are harmful

	More harmful than beneficial	Neutral	More beneficial than harmful	Responses
2015	67.3%	-	22.7%	352
2017	64.8%	14.1%	7.0%	1405
2019	78.4%	9.9%	3.5%	1020

Summary

- Wilding conifers are a major weed issue in NZ and internationally
- Major efforts to better understand wilding conifer invasions and improve their management are underway
- We're launching a new webinar series to highlight progress and stimulate discussion of what could be done next
- Let us know what you like to know more about!

rowan@nzwildingconifergroup.org

peltzerd@landcareresearch.co.nz

<https://www.wildingconifers.org.nz/>



Wildings Webinar Series

Next webinar on 12 August at 11am by Tom Etherington about distribution models of invasion risk

Email us with your suggestions of webinars/ topics you'd like to hear about at webinars@nzwildingconifergroup.org

