

# *Camera Traps for Recording Waterfowl Presence & Habitat Use*



## *Willow Woodlands*

*Antony Shadbolt, Lincoln University*



# Camera Settings

- 59 sites on the Styx River & Kaputone Stream
- Three weeks/21 days = 7 x 3-day samples/site
- Sites sampled in both 'winter' and 'summer'
- 12 Reconyx PC900 Professional Series Cameras
  - Covert IR Flash = b&w night time/full colour by day
  - 10 shots rapid fire/1-minute shut down
  - High sensitivity
  -

# Species Lists

- Pukeko
- Grey Duck\*
- Grey Teal
- Mallard
- Black Swan
- Shoveler
- Paradise Shelduck
- NZ Scaup
- Canada Goose
- Australasian Harrier
- Australian Coot
- Pied Cormorant
- Ring-necked Pheasant
- Pekin Duck
- Californian Quail
- Peafowl
- Passerines
- *Possum*
- *Hare*
- *Rabbit*
- *Cats*
- *Black Rats*
- *Norway Rats*
- *Dogs & People*

2013-07-22 10:59:22

M 1/10

9°C



A SHADBOLT PC900 01

RECONYA

2013-07-24 13:09:46

M 4/10

● 18°C



A SHADBOLT PC900 01

RECONYA

2013-07-24 11:39:54

M 1/10

● 12°C



A SHADBOLT PC900 01

RECONYA

2013-07-24 10:17:40

M 1/10

● 10°C



A SHADBOLT PC900 01

RECONYA

2013-07-25 08:48:19

M 3/10



0°C



A SHADBOLT PC900 01





2013-07-25 09:24:28

M 2/10



1°C



A SHADBOLT PC900 01





A BR4686LY FC800 01



A BR4686LY FC800 01



A BR4686LY FC800 01



A BR4686LY FC800 01



A BR4686LY FC800 01



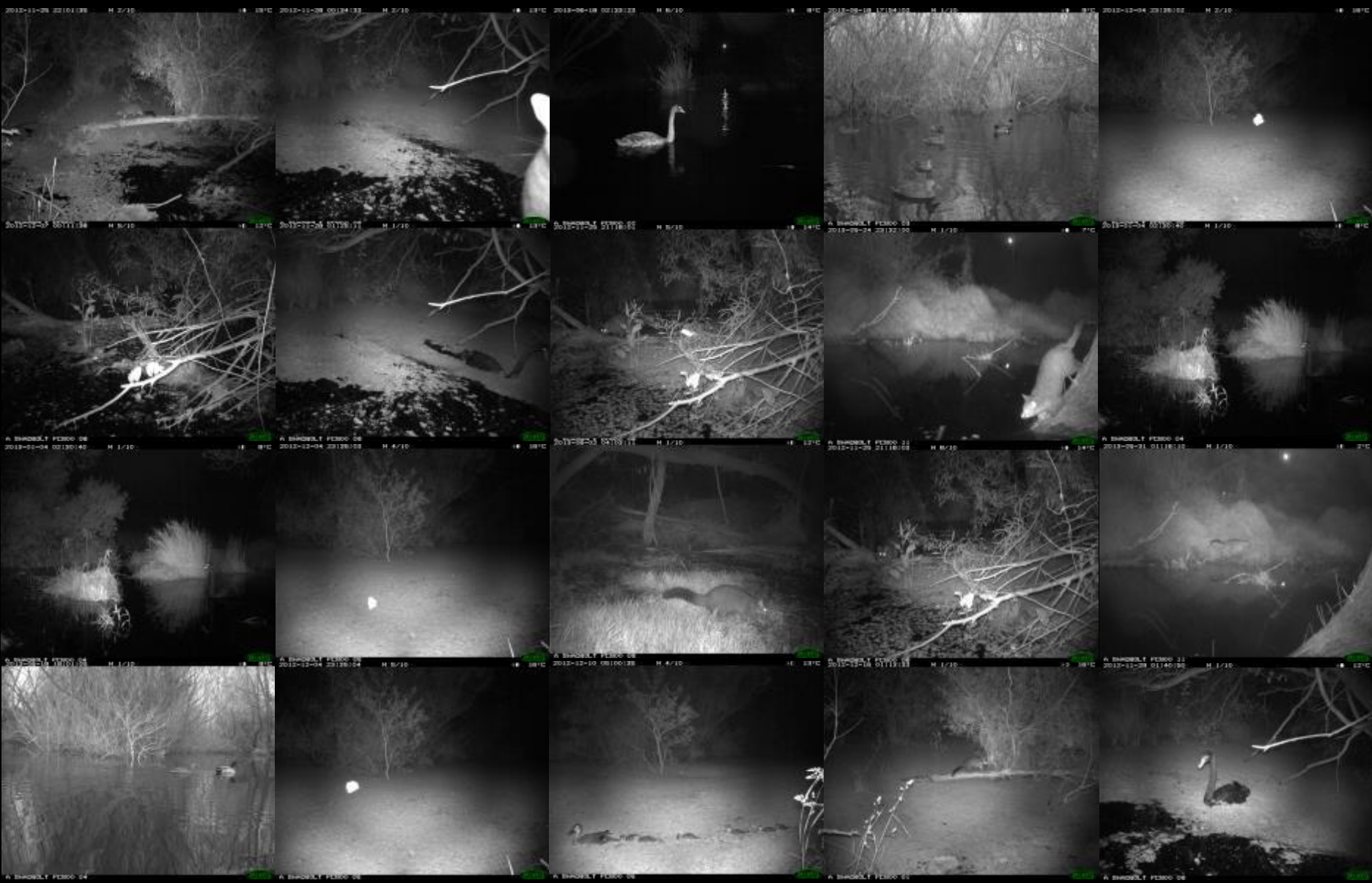
A BR4686LY FC800 01











# Styx Living Laboratory Trust

## VISION for Styx Mill Conservation Reserve



a Gordon  
Kumal Grove  
cell phone site  
play structures  
biket track  
classroom  
etc  
platform  
proof fence





Thank You

BRIAN MASON  
scientific & technical trust