

Puka Whakamārama o te Pepe Nui Te Hiku



Te Takenga mai o te Pepe
I pikī ake a Tāne, te Atua o te ngahere, ki ngā Rangī Tūhāhā, kia toro atu ki tōna tuakana a Rēhua. Nā Rēhua he ahi tunu kai, he hue hoki i tonu. Ko tā Tāne, 'He aha tā tāua kai e te tuakana?' Ka rūrūa e Rēhua tōna upoko kia taka atu kia rua ngā tūi i ōna makawe. Tūmeke atu a Tāne, kihai ia i te pirangi kai i ngā manu tapu nō te upoko o tōna tuakana. Ka uia kē e ia, 'Me whakahoki ēnei manu ki a Papatūānuku?' I whakaae a Rēhua, ā, ko tā Rēhua ka noho ngā manu ki ngā rākau, ka kai i ngā hua o te ngahere. I a Rēhua e rūrū ana i tōna upoko i puta atu hoki ētahi atu 'manu' o Rēhua, arā a Pepe, a Tātarakihī, a Pihareinga, a Kēkerewai. Ko ēnei pēpeke kua tapaina ko 'Ngā Manu a Rēhua', ā, he manu e puta mai i te raumati.

Ngā Whetū
Ko te kōrero o pepe kua kawea e te kāhui whetū o Rēhua te mātāmua o Raki rāua ko Papa. Ko ia te whetū whero, te ariki o ngā whetū.

Wairua Tangata
Ko ō te whakaaro Māori ko te wairua o rātou kua wehe ki te pō, kua hoki mai ki te ao marama hei pepe.

He mea whakahirahira te pepe ki te rerenga rauropi (biodiversity) o Aotearoa

He whānau rahi te **Lepidoptera**, arā ko ngā pepe me ngā pūrerehua. Ko rātou te tuatoru o ngā pēpeke katoa i Aotearoa. 1750 nui ake ngā momo pepe kua tapaina. E ai ki ngā kaipūtaiao kia 300 anō kāore anō kia huraina.

He motuhake te Pepe
86% o ngā pepe i Aotearoa he mea taketake (endemic). Nō konei ake, mā tātou e tiaki.

He aha i hira ai te pepe?
He wāhi nui ki ngā pepe ki te rauropi (ecosystem) ko rātou te pū o te tukutuku kai matatini. He kaiota (herbivore) te anuhe i ngā otaota taketake.

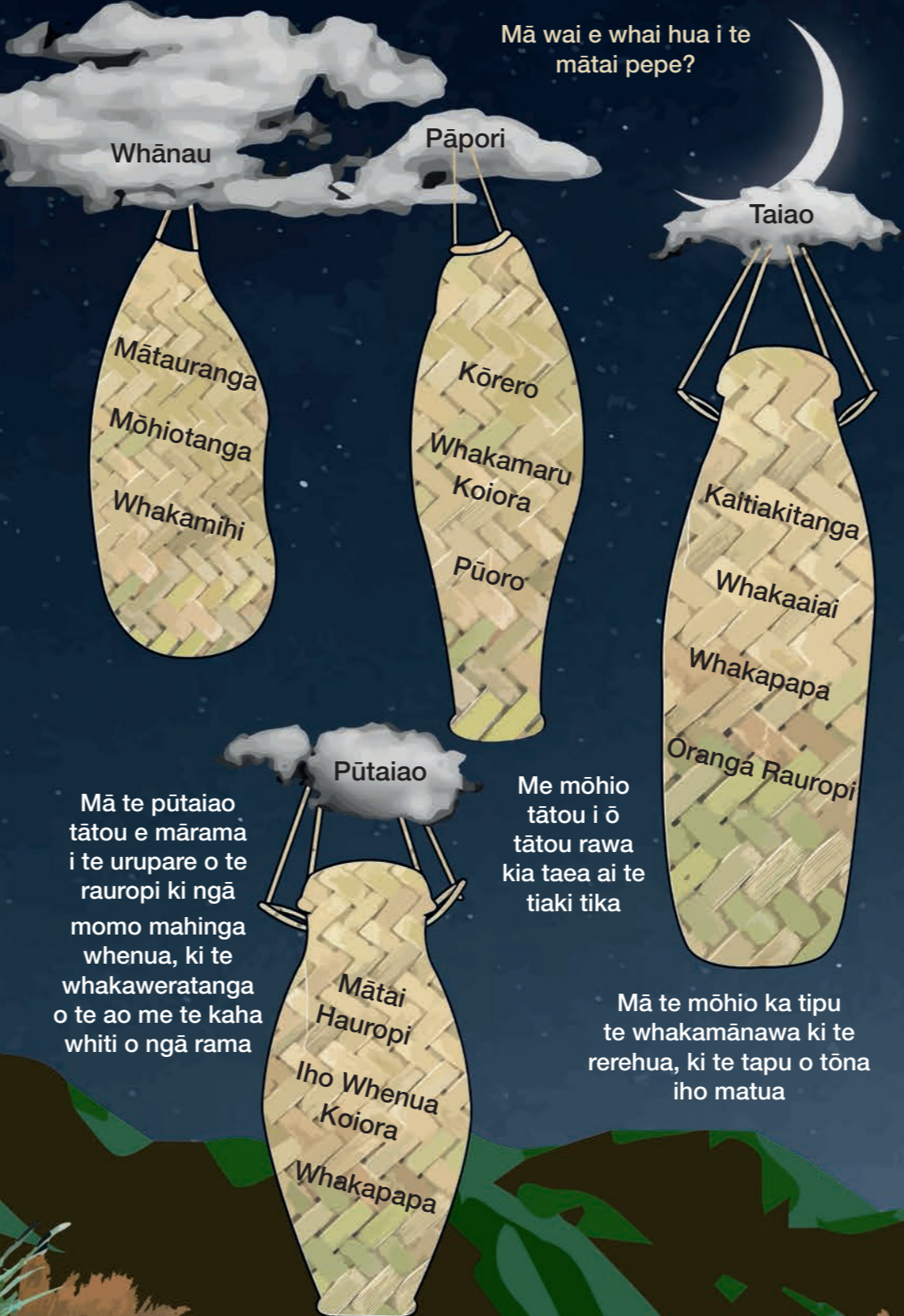
He whakaaiai (pollinator) whakahirahira te pepe. He nui nei ngā otaota taketake ka whakaaiaitia e te pepe. Ka mahi tēnei mahi nui i te pō i a te marea e moe ana, nā reira ka whakarapaina e tātou te mahi rangatira o te pepe. He tino kai te pepe mā ngā pēpeke me ngā manu taketake. Heoi anō he kai mātua hoki ki ngā riha rāwaho pērā i te kiore itiiti me te kiore.

He riha hoki te pepe
Ko Hihue (te Pepe Kūmara, *Agrius convolvuli*) tētahi riha nui i ngā mārā kūmara. He nui hoki ngā whakataukī mō te āwhato me te nui o tāna mahi kai.

He riha rāwaho nō inātata nei ko te pepe codling (*Cydia pomonella*) i kawea mai i Ūropi, ā, ka kainga ngā āporo, ngā pea, ngā wōronati me ētahi atu hua rākau.

He manihoko te pepe i tāna kai i ngā pūeru kua tuia i te whītau māori pērā i te wūru, i te mōhenu me te huruhuru. Me te mēa nei tokoiti noa ngā momo pepe e kai pūeru ana. He māmā te whakatika, me tuku atu ngā pūeru ki te pātaka makariri kia rua pea ngā wā.

Puka Whakamārama o te Pepe Nui
Ko ngā pepe nui, ngā pepe māori anake nō tēnei wāhi taiao ki tēnei pānui. Ki te kitea e koe tētahi pepe kāore i roto i te pānui nei, he mea puiaki pea, he mea noho hōrapa pea ehara nō tēnei wāhi taiao, he pepe ririki pea, he mea hou pea.



Mā te pūtaiao tātou e mārāmā i te urupare o te rauropi ki ngā momo mahinga whenua, ki te whakaweratanga o te ao me te kaha whiti o ngā rama

Me mōhio tātou i ō tātou rawa kia taea ai te tiaki tika

Mā te mōhio ka tipu te whakamānawa ki te rerehua, ki te tapu o tōna iho matua

Me hopu te pepe?
Ka puta te pepe i te pō nā reira kāore te nuinga e mōhio ana e hia, kei te aha rānei ngā pepe. Me te whakarapa tonu, engari me kōhi ngā pepe kia tūtohu.

Te hua o te raraunga aronga whānui?
Mā te whakamahi i te momo māhanga kotahi (arā te Māhanga Pepe Heath) ka inehia ngā raraunga i ahu mai i ngā wāhi katoa, i te huringa wā hoki. Mā te raraunga aronga whānui ka tiakina tāhi ai tātou te pepe. Mehemea ka heke ngā nama ka tere kitea e mātou, ā, ka whakatauria rautaki kia maimoatia ai ngā pepe.

He aha te hua o te raraunga whakatauranga?
Mā te tātai i ia pepe o tētahi momo pepe ka kōhi pārongo anō atu i te rārangi ingoa noa. Ko tēnei pārongo, ko te raraunga whakatauranga. Mā te huhua o te pārongo ka kitea he panonitanga i te wā, i te wāhi rānei.

He aha me mātai ai ngā pepe?
He ngāngara māpua te pepe. He nui ngā momo pepe e whai mahi ana, e whai wāhi ana i te rauropi. He hononga anō tō te pepe ki ērā atu momo koiora (arā, otaota, manu, momo riha rāwaho, ērā atu pēpeke).

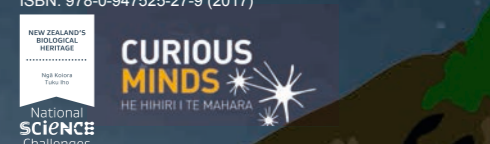
Mēnā he panonitanga i te rauropi ko ngā pepe tētahi o ngā koiora tuatahi ka rangona te kōitoi. He tohu pai o te panonitanga ki tō rātou rauropi.

Kuputaka?
Lepidoptera: Pepe, Pūrerehua Taketake/Endemic: Nō tērā wāhi ake
Rauropi/Ecosystem: Ko te taiao me ōna āhuatanga katoa
Tukutuku kai: Ka kai a wai i a wai
Kaiota: Kararehe kai otaota anake
Huna/Nocturnal: Ka mahi i te pō
Hapori/Community: Ngā momo koiora nō tētahi takiwā

Mā raro nei he wāhi āwhina anō
www.landcareresearch.co.nz/mothnet
Email: MothNetOtago@gmail.com
@MothNetNZ
MothNetNZ
www.naturewatch.org.nz/
Entomological Society of New Zealand:
www.ento.org.nz

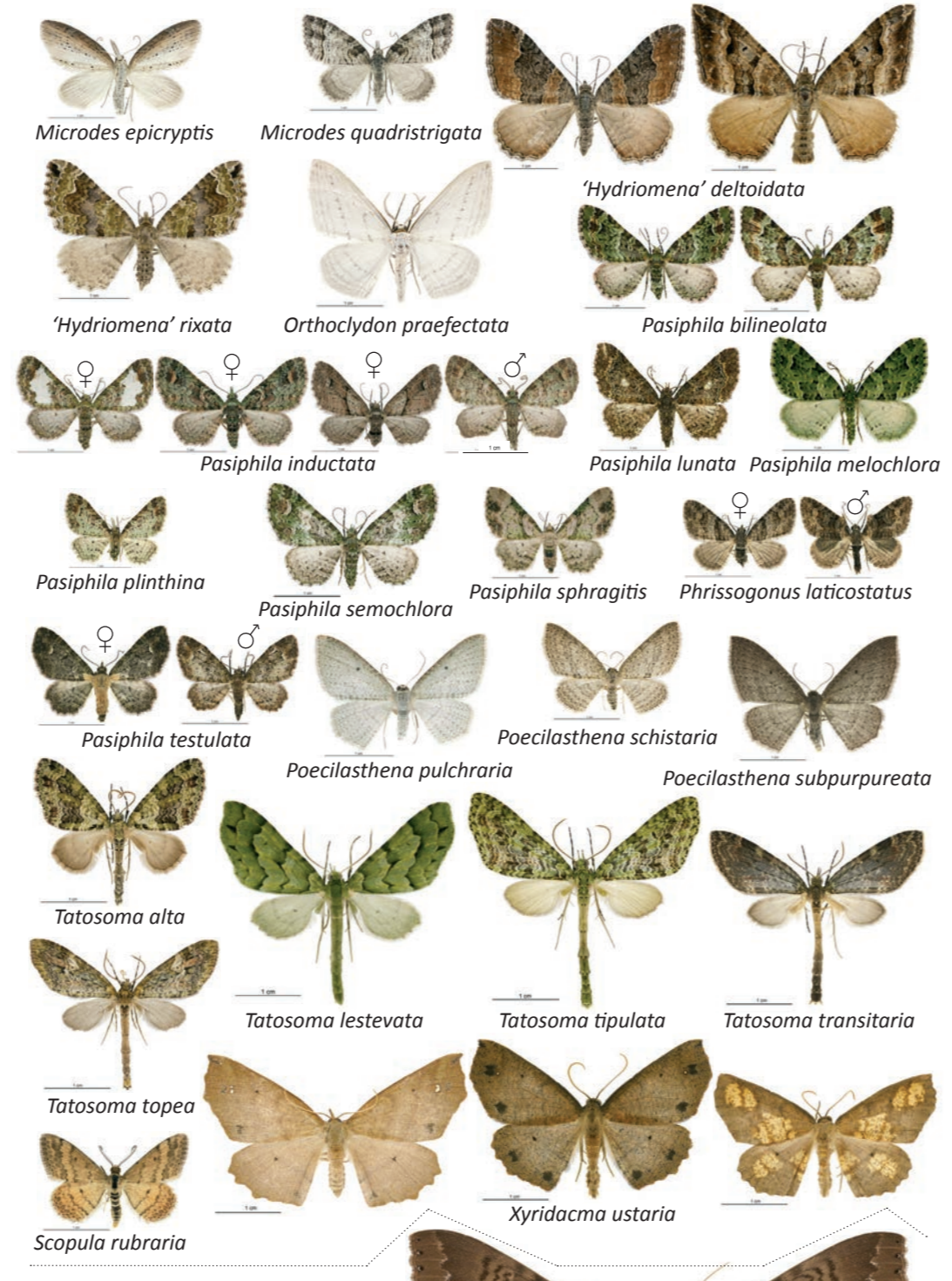
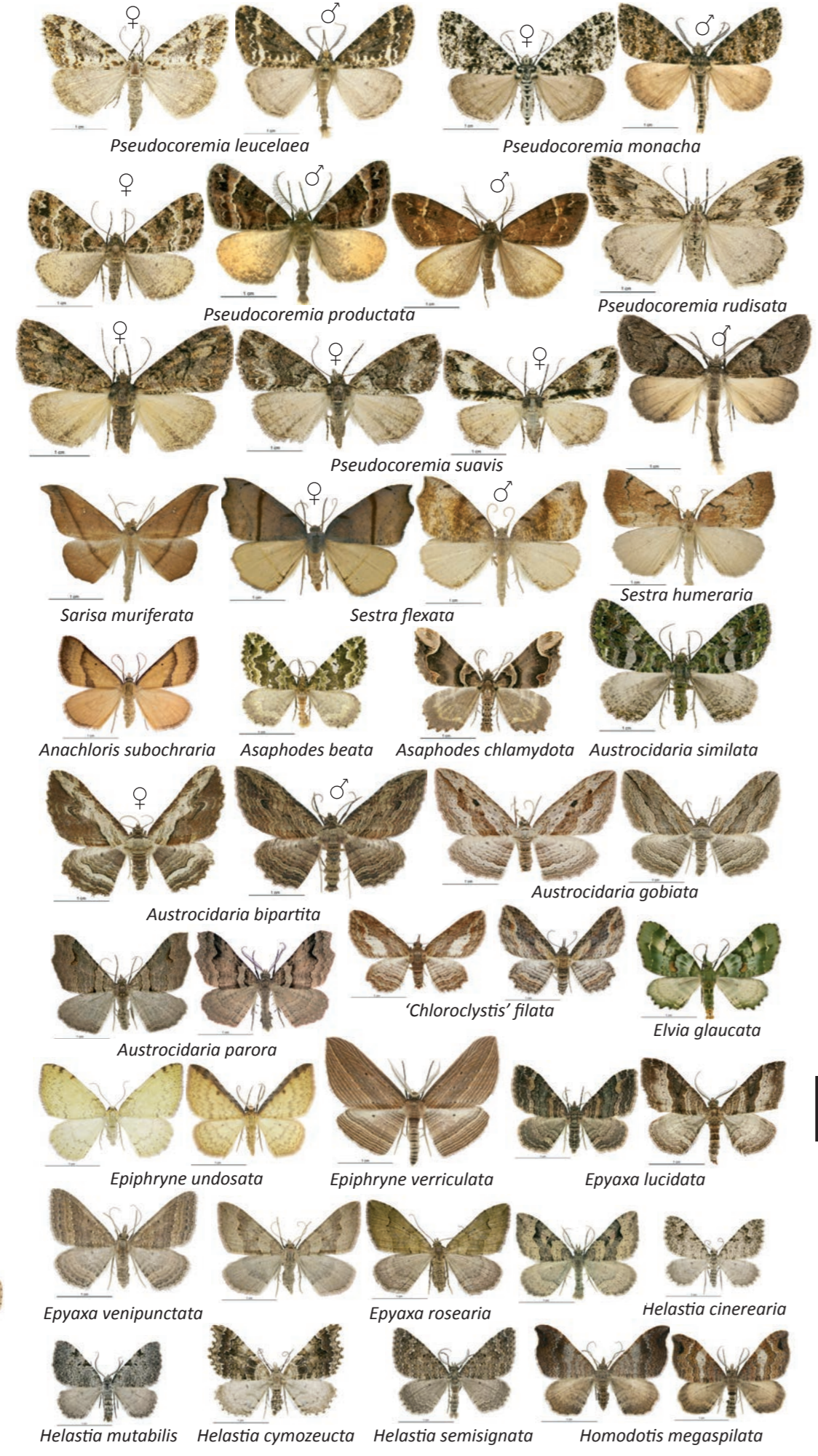
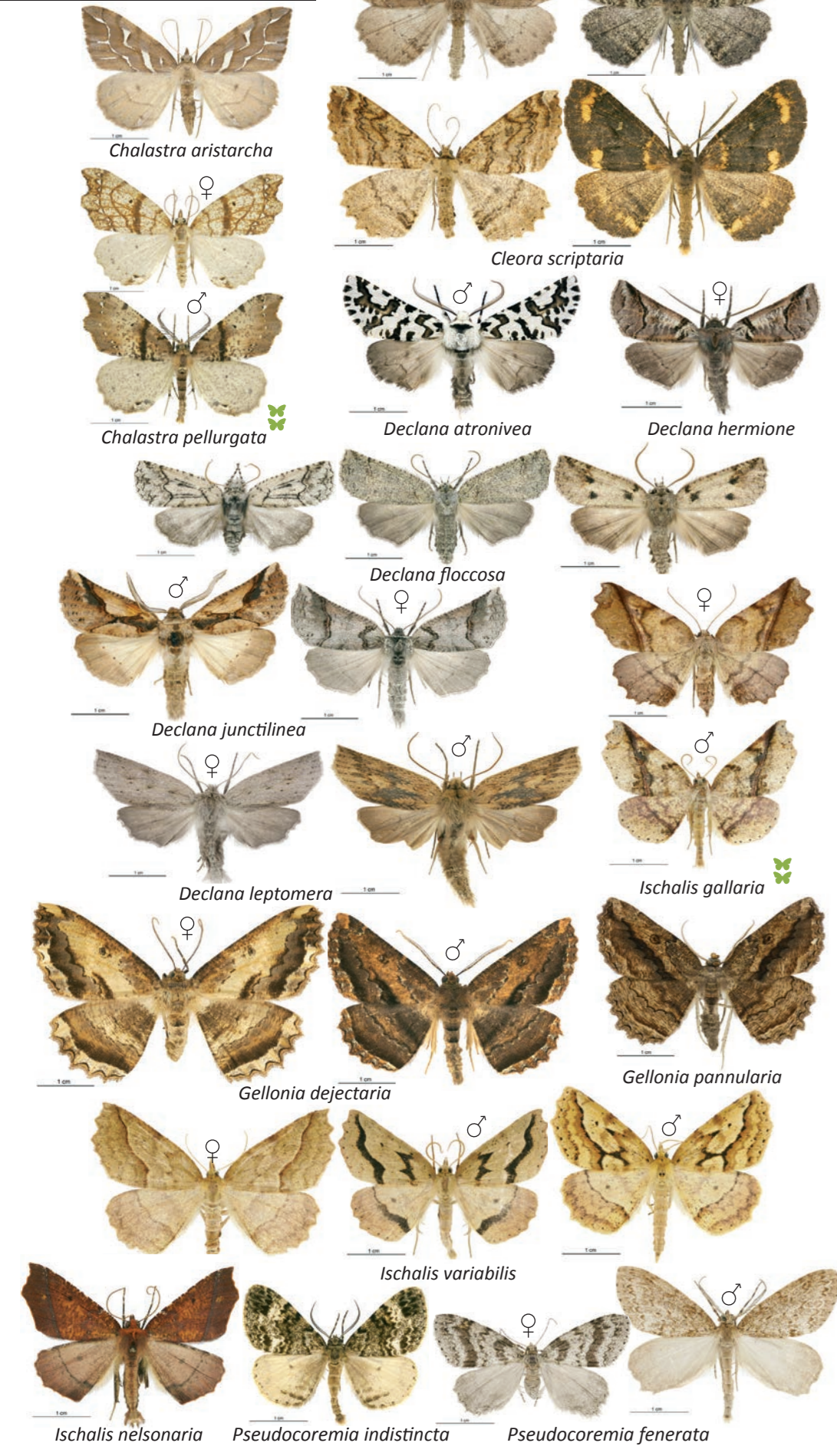
Ngā mihi
Ngā tuinga, te kilko me te hanga o te pānui nā Dr Barbara J Anderson, rātou ko Komene Cassidy, ko Victoria Campbell, ko Dr Robert Hoare, ko Tiahuia Kawe-Small, ko Tahu MacKenzie, ko Dr Ralf Ohlemüller, ko Tangiwai Rewi, ko Dr Priscilla Wehi, ko Emma Burns. Nā Sean W Gilles ngā whakaahua. Nā Dr Robert Hoare rātou ko te hapori pepe o Aotearoa te rārangi pepe i kōhi. Nā Birgit Rhode ngā whakaahua mai i ngā tauria i te NZAC, nā te pūtea tautoko mai i Terrestrial Freshwater Biodiversity Information System (TFBIS).

I huatia mai te pānui nei e Manaaki Whenua i te kaupapa, Ahi Pepe MothNet. Nā MBIE He Hihiri i Te Mahara me Ngā Koiora Tuku Iho te pūtea tautoko.

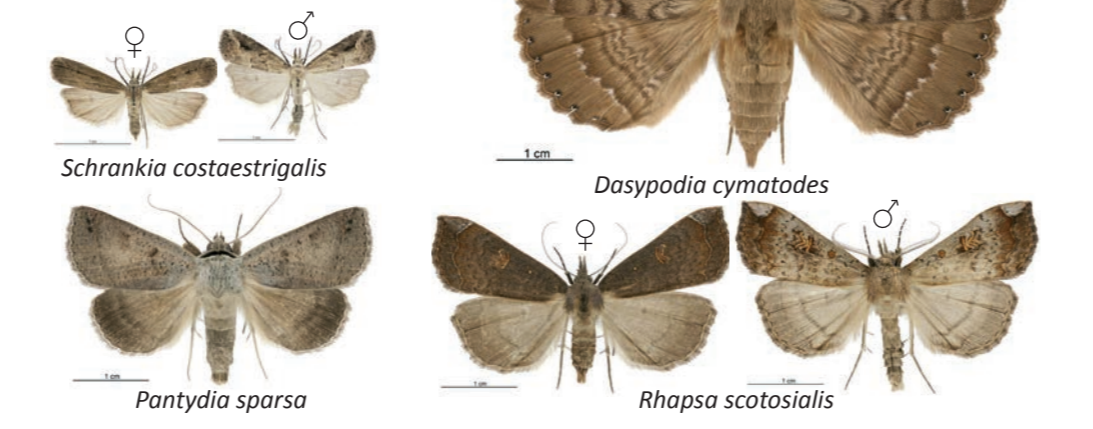


This work is licensed under a Creative Commons Attribution-NonCommercial-NoDerivs 3.0 New Zealand License. To view details of this license go to www.creativecommons.org/licenses/by-nc-nd/3.0/nz/

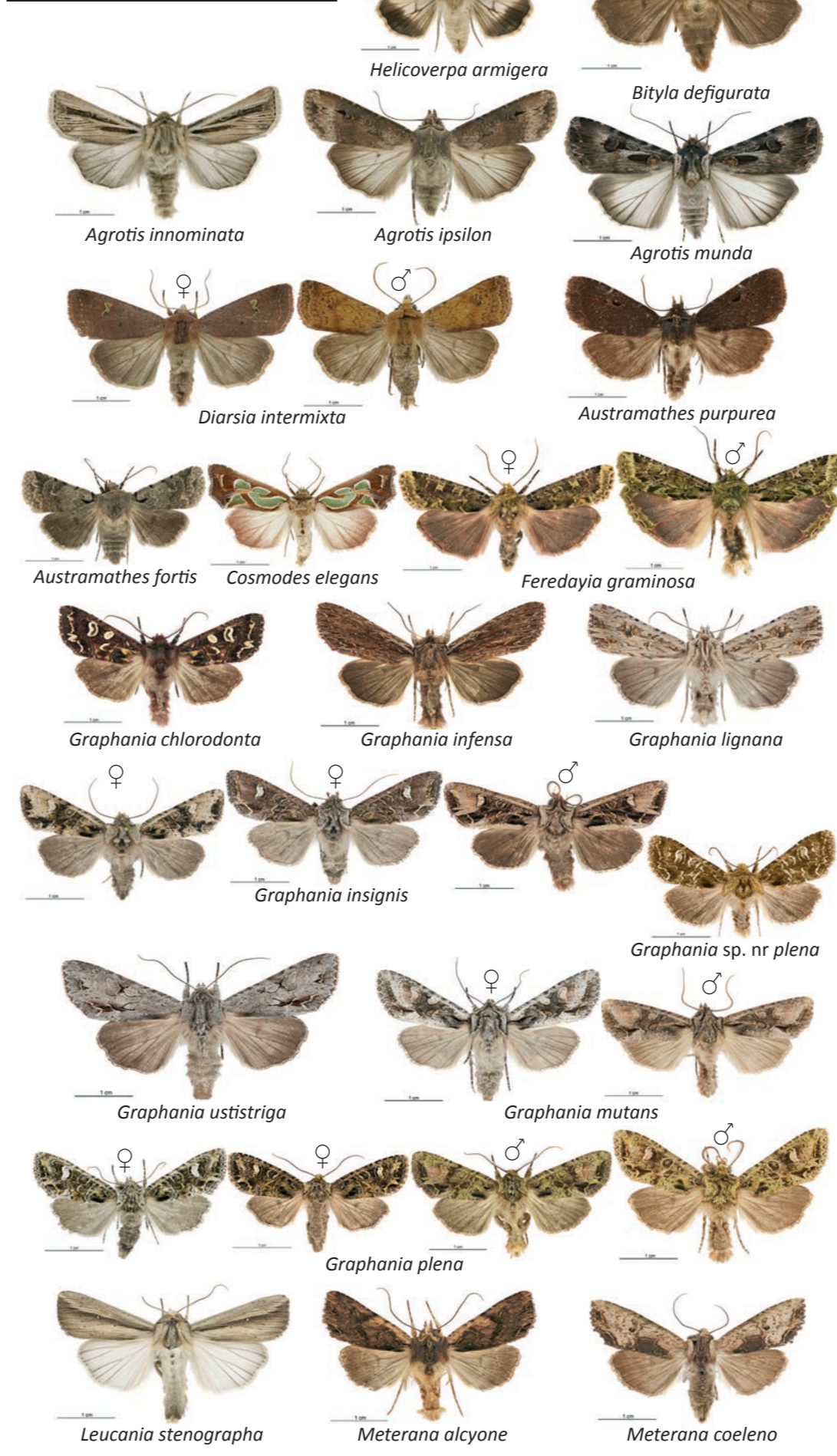
Geometridae



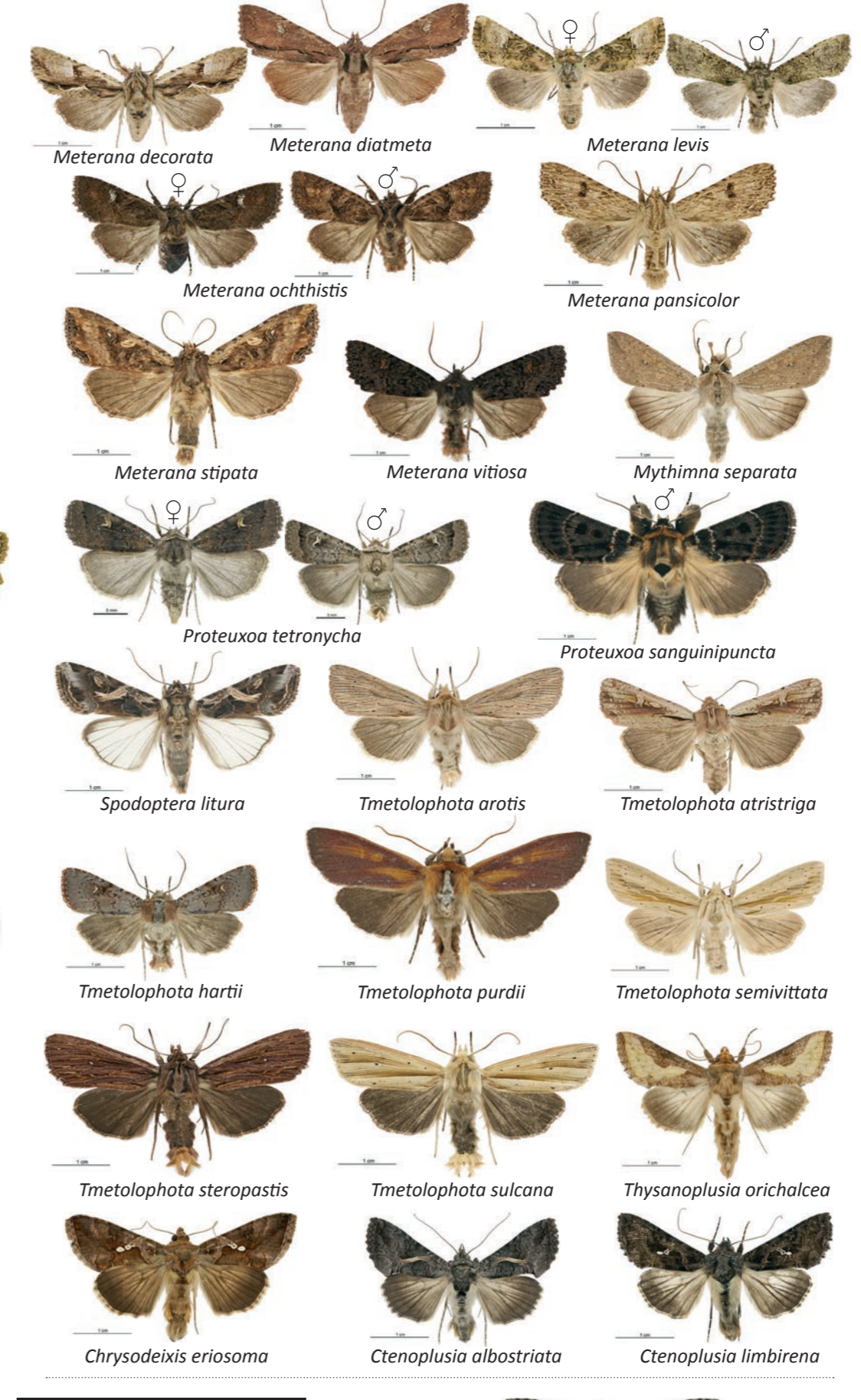
Erebidae



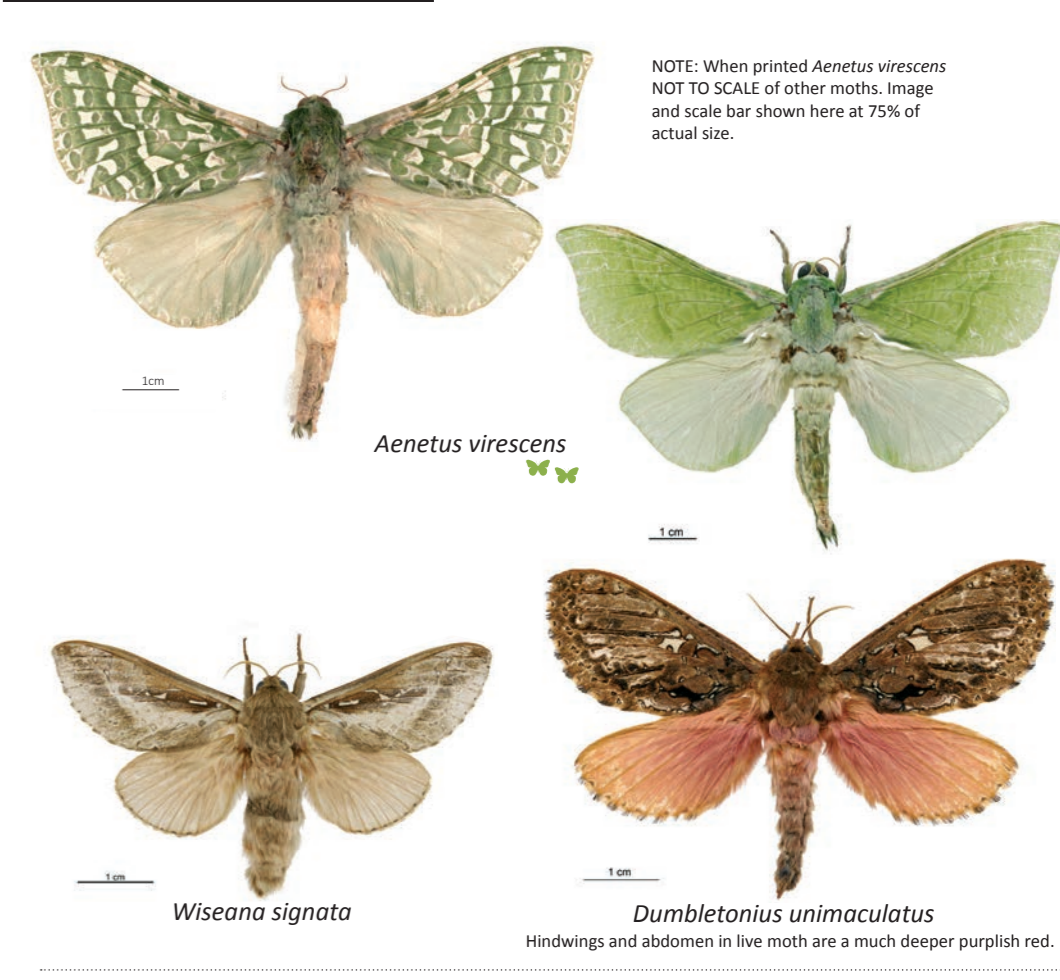
Noctuidae



Nolidae

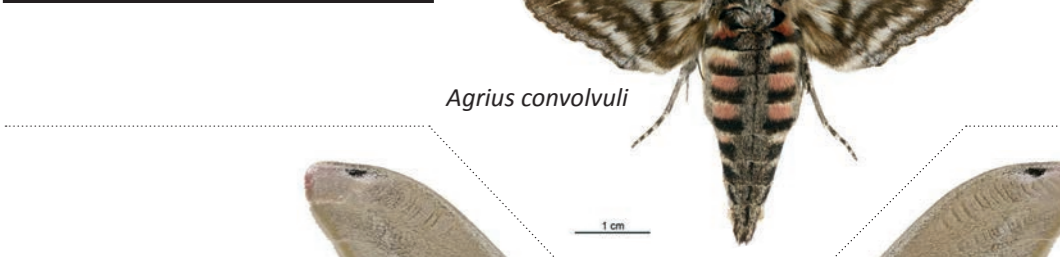


Hepialidae



NOTE: When printed Aenetus virescens NOT TO SCALE of other moths. Image and scale bar shown here at 75% of actual size.

Sphingidae



Saturniidae

