

Puka Whakamārama o te Pepe Nui Te Ihu



Te Takenga mai o te Pepe
I pikī ake a Tāne, te Atua o te ngahere, ki ngā Rangi Tūhāhā, kia toro atu ki tōna tuakana a Rēhua. Nā Rēhua he ahi tunu kai, he hue hoki i tonu. Ko tā Tāne, 'He aha tā tāua kai e te tuakana?' Ka rūrūa e Rēhua tōna upoko kia taka atu kia rua ngā tūi i ōna makawe. Tūmeke atu a Tāne, kihai ia i te pirangi kai i ngā manu tapu nō te upoko o tōna tuakana. Ka uia kē e ia, 'Me whakahoki ēnei manu ki a Papatūānuku?' I whakaae a Rēhua, ā, ko tā Rēhua ka noho ngā manu ki ngā rākau, ka kai i ngā hua o te ngahere. I a Rēhua e rūrū ana i tōna upoko i puta atu hoki ētahi atu 'manu' o Rēhua, arā a Pepe, a Tātaraikihi, a Pihareinga, a Kēkerewai. Ko ēnei pēpeke kua tapaina ko 'Ngā Manu a Rēhua', ā, he manu e puta mai i te raumati.

Ngā Whetū
Ko te kōrero o pepe kua kawea e te kāhui whetū o Rēhua te mātāmua o Rangi rāua ko Papa. Ko ia te whetū whero, te ariki o ngā whetū.

Wairua Tangata
Ko ō te whakaaro Māori ko te wairua o rātou kua wehe ki te pō, kua hoki mai ki te ao marama hei pepe.

He mea whakahirahira te pepe ki te rerenga rauropi (biodiversity) o Aotearoa
He whānau rahi te **Lepidoptera**, arā ko ngā pepe me ngā pūrerehua. Ko rātou te tuatoru o ngā pēpeke katoa i Aotearoa. 1750 nui ake ngā momo pepe kua tapaina. E ai ki ngā kaipūtaiao kia 300 anō kāore anō kia huraina.

He motuhake te Pepe
86% o ngā pepe i Aotearoa he mea taketake (endemic). Nō konei ake, mā tātou e tiaki.

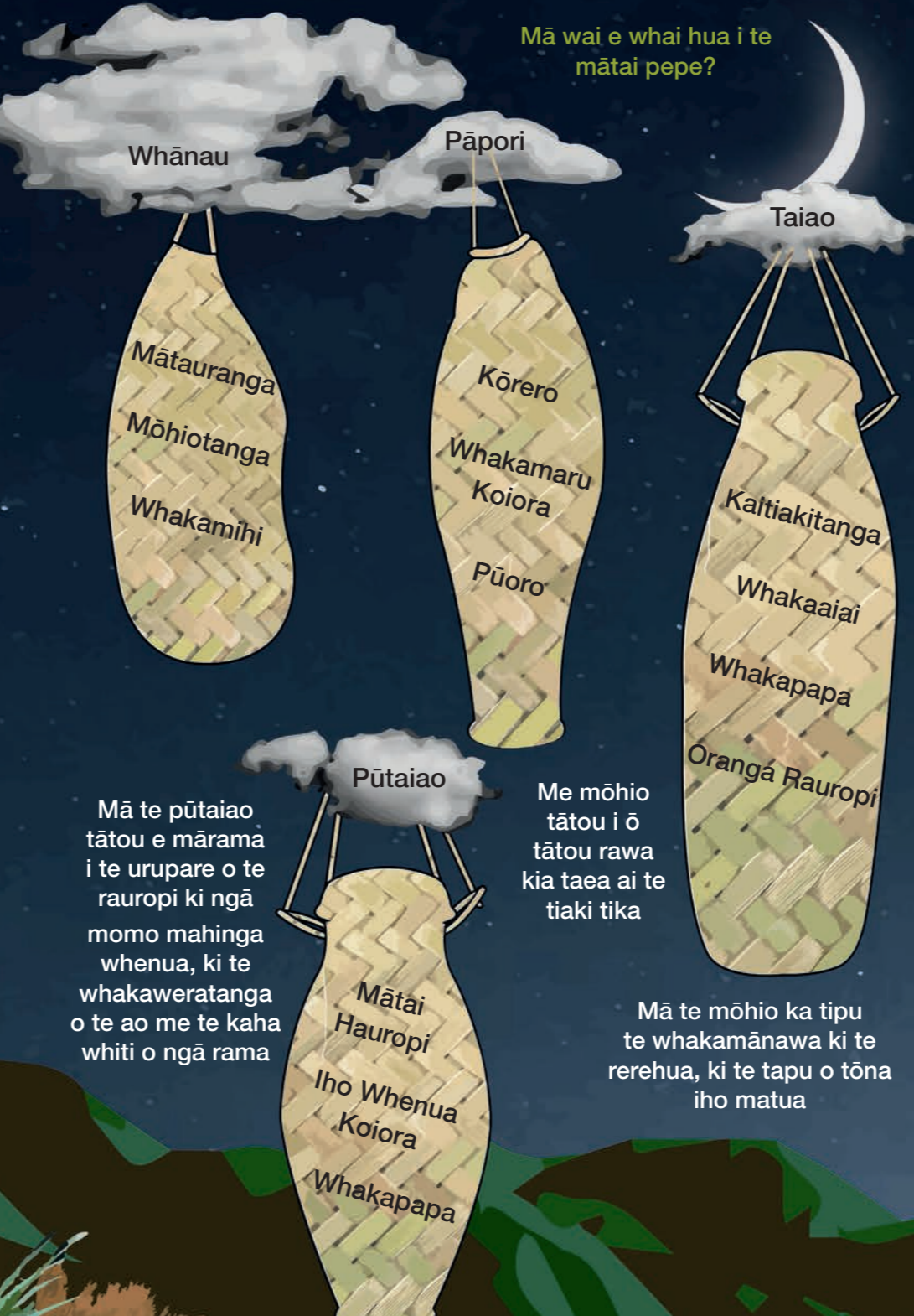
He aha i hira ai te pepe?
He wāhi nui ki ngā pepe ki te rauropi (ecosystem) ko rātou te pū o te tukutuku kai matatini. He kaiota (herbivore) te anuhe i ngā otaota taketake.

He riha rāwaho nō inātata nei ko te pepe codling (*Cydia pomonella*) i kawea mai i Ūropi, ā, ka kainga ngā āporo, ngā pea, ngā wōronati me ētahi atu hua rākau.

He manihoko te pepe i tāna kai i ngā pūeru kua tuia i te whaitau māori pērā i te wūru, i te mōhenu me te huruhuru. Me te mēa nei tokoiti noa ngā momo pepe e kai pūeru ana. He māmā te whakatika, me tuku atu ngā pūeru ki te pātaka makariri kia rua pea ngā wā.

Puka Whakamārama o te Pepe Nui
Ko ngā pepe nui, ngā pepe māori anake nō tēnei wāhi taiao ki tēnei pānui. Ki te kitea e koe tētahi pepe kāore i roto i te pānui nei, he mea puiaki pea, he mea noho hōrapa pea ehara nō tēnei wāhi taiao, he pepe ririki pea, he mea hou pea.

He riha hoki te pepe
Ko Hihue (te Pepe Kūmara, *Agrius convolvuli*) tētahi riha nui i ngā mārā kūmara. He nui hoki ngā whakataukī mō te āwhato me te nui o tāna mahi kai.



Mā te pūtaiao tātou e mārāmā i te urupare o te rauropi ki ngā momo mahinga whenua, ki te whakaweratanga o te ao me te kaha whiti o ngā rama

Me mōhio tātou i ō tātou rawa kia taea ai te tiaki tika

Mā te mōhio ka tipu te whakamānawa ki te rerehua, ki te tapu o tōna iho matua

Me hopu te pepe?
Ka puta te pepe i te pō nā reira kāore te nuinga e mōhio ana e hia, kei te aha rānei ngā pepe. Me te whakarapa tonu, engari me kōhi ngā pepe kia tūtohu.

Te hua o te raraunga aronga whānui?
Mā te whakamahi i te momo māhanga kotahi (arā te Māhanga Pepe Heath) ka inehia ngā raraunga i ahu mai i ngā wāhi katoa, i te huringa wā hoki. Mā te raraunga aronga whānui ka tiakina tahi ai tātou te pepe. Mehemea ka heke ngā nama ka tere kitea e mātou, ā, ka whakatauria rautaki kia maimoatia ai ngā pepe.

He aha te hua o te raraunga whakataiue?
Mā te tātai i ia pepe o tētahi momo pepe ka kōhi pārongo anō atu i te rārangi ingoa noa. Ko tēnei pārongo, ko te raraunga whakataiue. Mā te huhua o te pārongo ka kitea he panonitanga i te wā, i te wāhi rānei.

He aha me mātai ai ngā pepe?
He ngāngara māpua te pepe. He nui ngā momo pepe e whai mahi ana, e whai wāhi ana i te rauropi. He hononga anō tō te pepe ki ērā atu momo koiora (arā, otaota, manu, momo riha rāwaho, ērā atu pēpeke).

Mēnā he panonitanga i te rauropi ko ngā pepe tētahi o ngā koiora tuatahi ka rangona te kaitoi. He tohu pai o te panonitanga ki tō rātou rauropi.

Kuputaka?
Lepidoptera: Pepe, Pūrerehua Taketake/Endemic: Nō tērā wāhi ake
Rauropi/Ecosystem: Ko te taiao me ōna āhuatanga katoa
Tukutuku kai: Ka kai a wai i a wai
Kaiota: Kararehe kai otaota anake
Huna/Nocturnal: Ka mahi i te pō
Hapori/Community: Ngā momo koiora nō tētahi takiwā

Mā raro nei he wāhi āwhina anō
www.landcareresearch.co.nz/mothnet
Email: MothNetOtago@gmail.com
@MothNetNZ
MothNetNZ
www.naturewatch.org.nz/
Entomological Society of New Zealand:
www.ento.org.nz

Ngā mihi
Ngā tuinga, te kilko me te hanga o te pānui nā Dr Barbara J Anderson, rātou ko Komene Cassidy, ko Victoria Campbell, ko Dr Robert Hoare, ko Tiahuia Kawe-Small, ko Tahu MacKenzie, ko Dr Ralf Ohlemüller, ko Tangiwai Rewi, ko Dr Priscilla Wehi, ko Emma Burns. Nā Sean W Gilles ngā whakaahua. Nā Dr Robert Hoare rātou ko te hapori pepe o Aotearoa te rārangi pepe i kōhi. Nā Birgit Rhode ngā whakaahua mai i ngā tauria i te NZAC, nā te pūtea tautoko mai i Terrestrial Freshwater Biodiversity Information System (TFBIS).

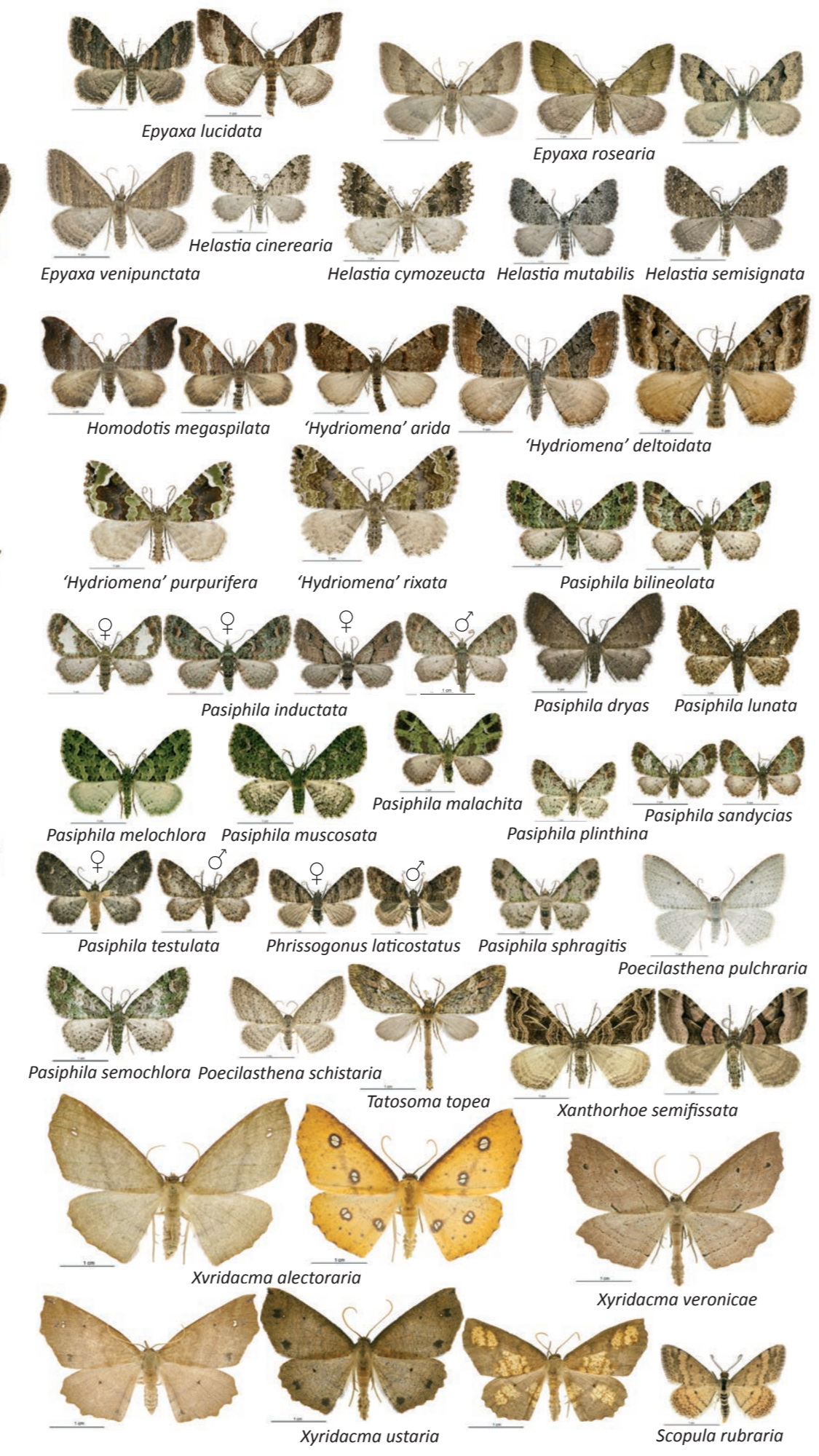
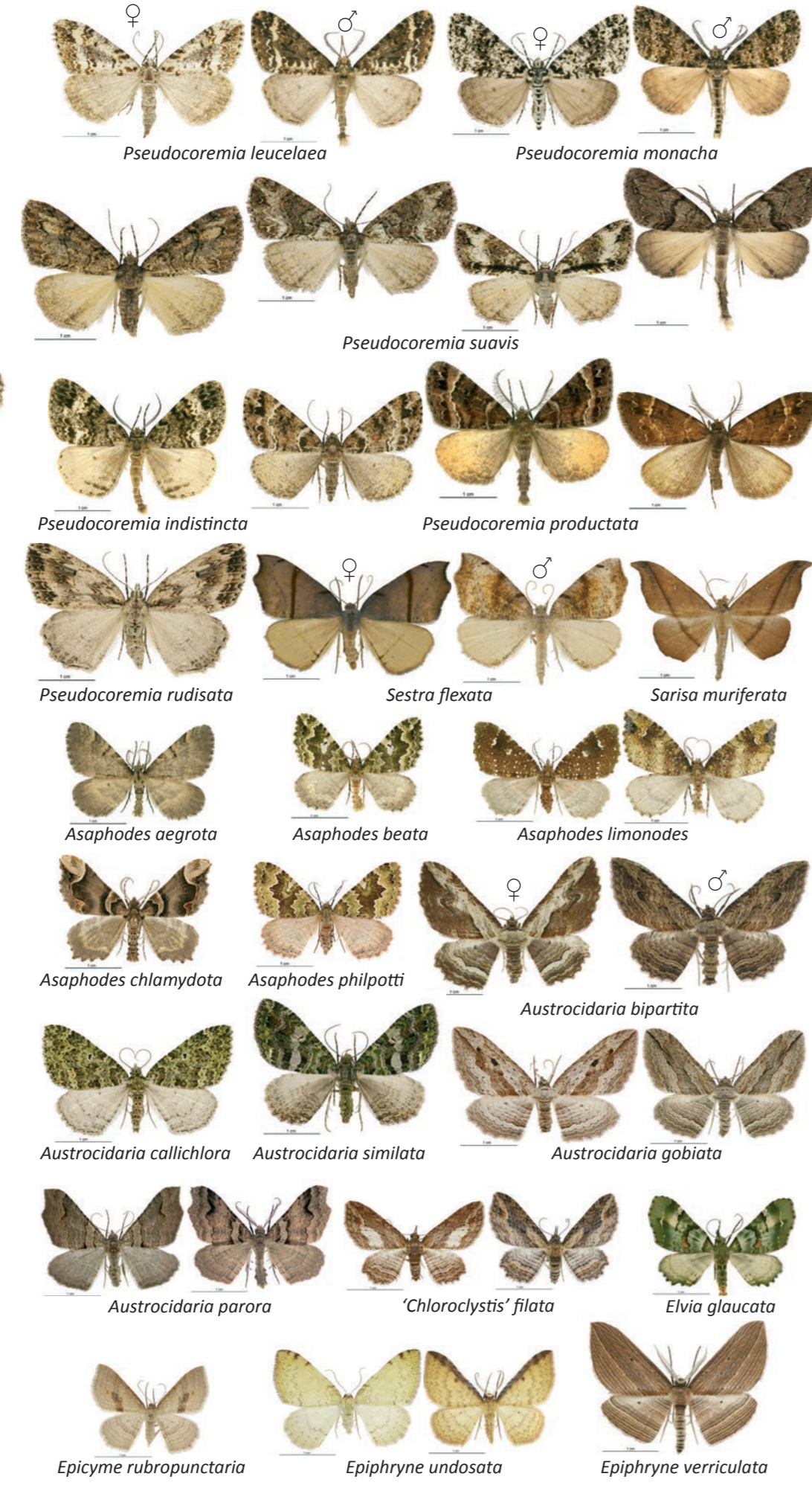
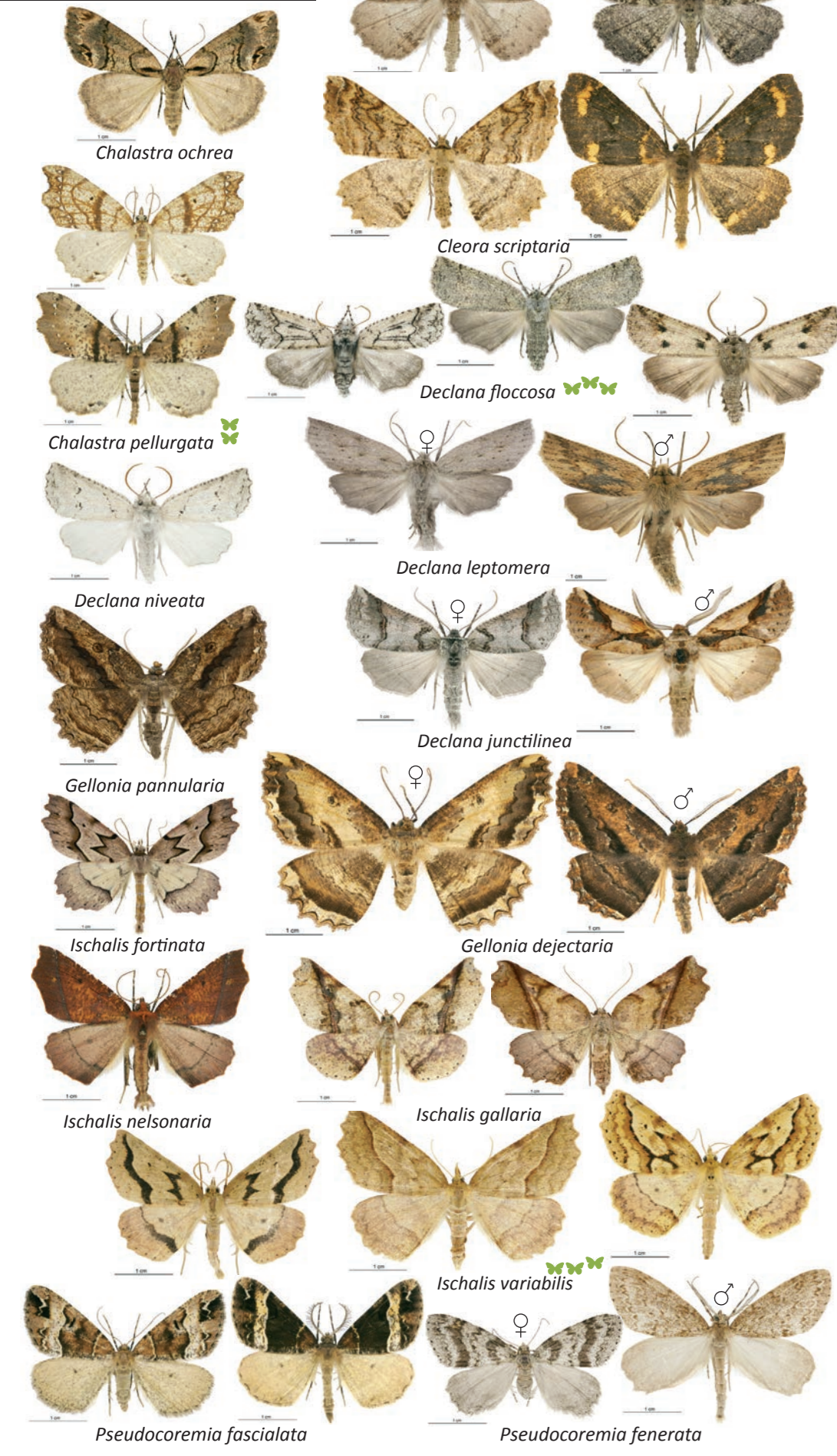
I huatia mai te pānui nei e Manaaki Whenua i te kaupapa, Ahi Pepe MothNet. Nā MBIE He Hihiri i Te Mahara me Ngā Koiora Tuku Iho te pūtea tautoko.
ISBN: 978-0-947525-25-5 (2017)



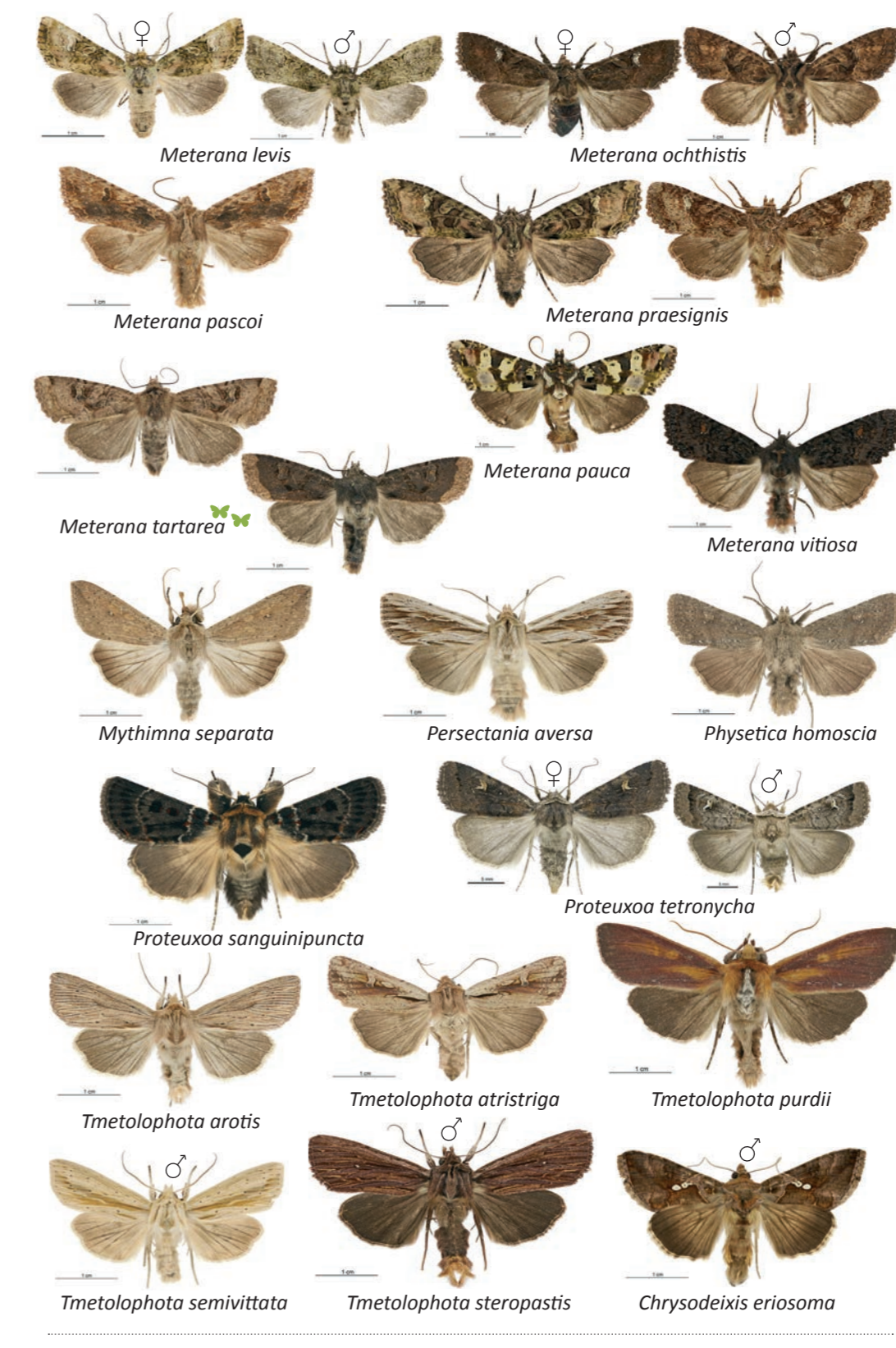
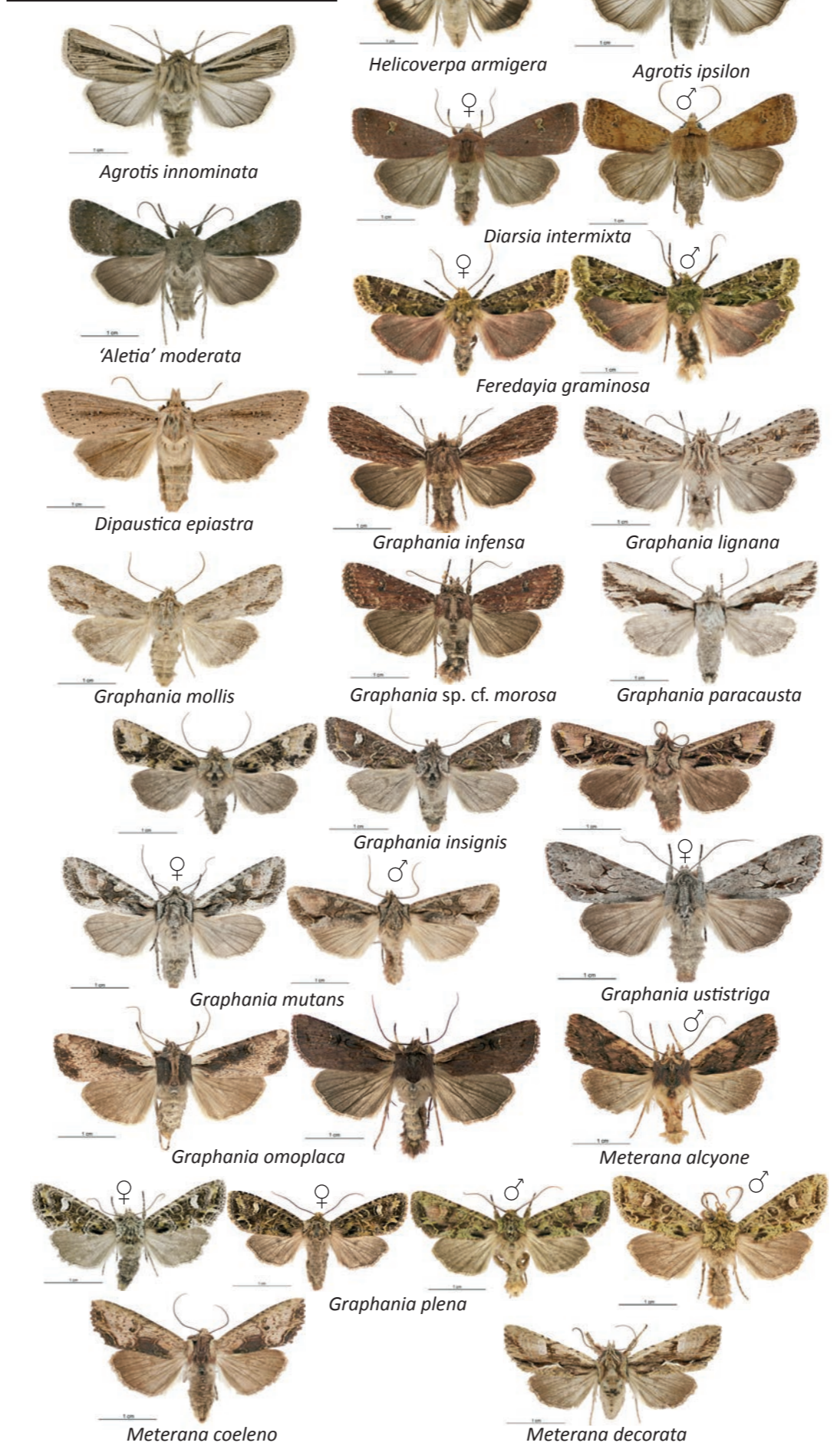
"Ka puta te pepetuna i te pō,
ka puta ki te wero tuna"
Tangiwai Rewi



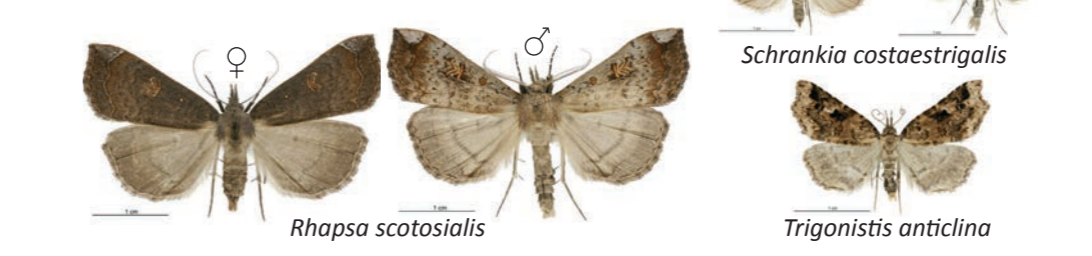
Geometridae



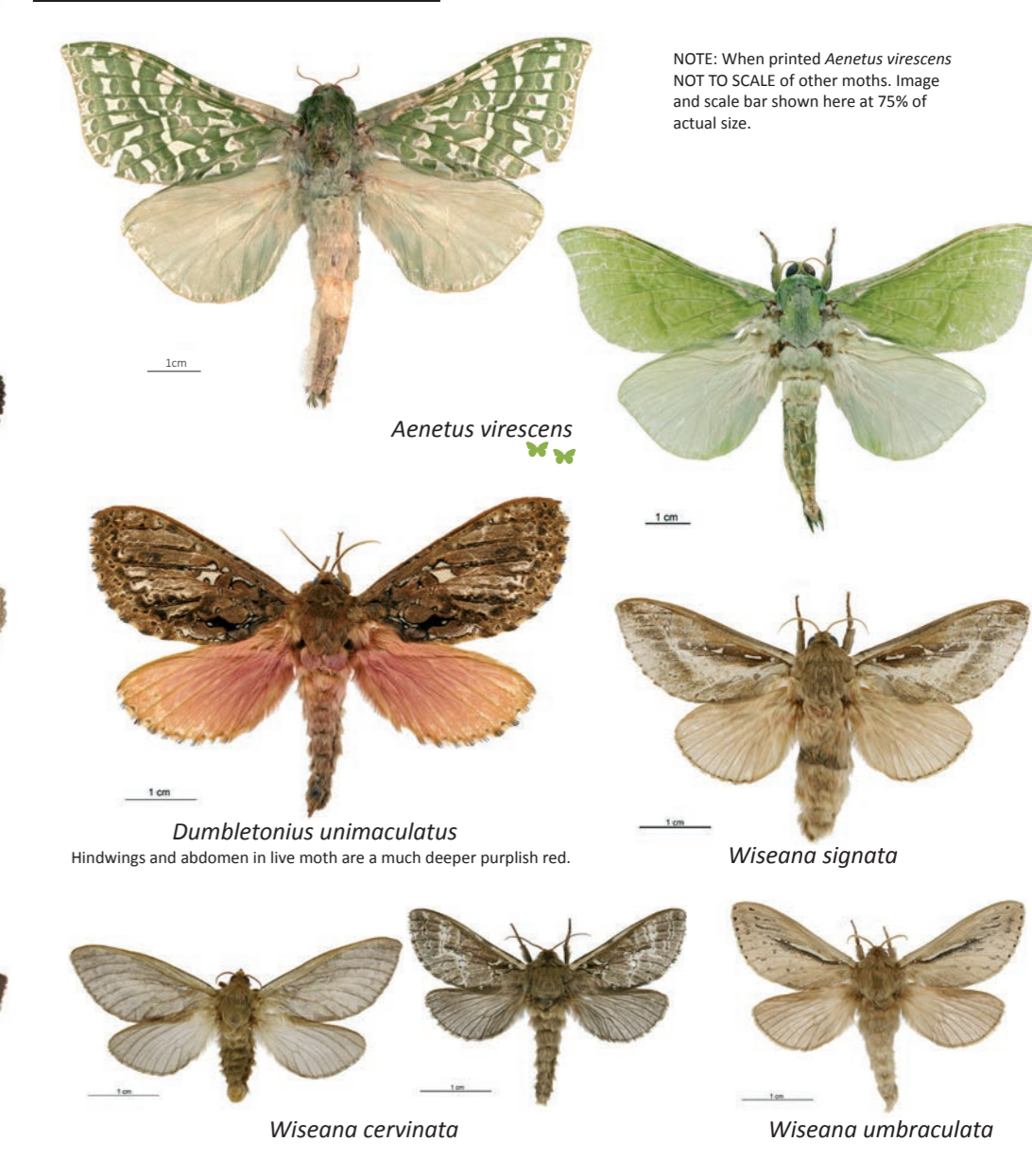
Noctuidae



Erebidae



Hepialidae



NOTE: When printed Aenetus virescens NOT TO SCALE of other moths. Image and scale bar shown here at 75% of actual size.

Saturniidae

