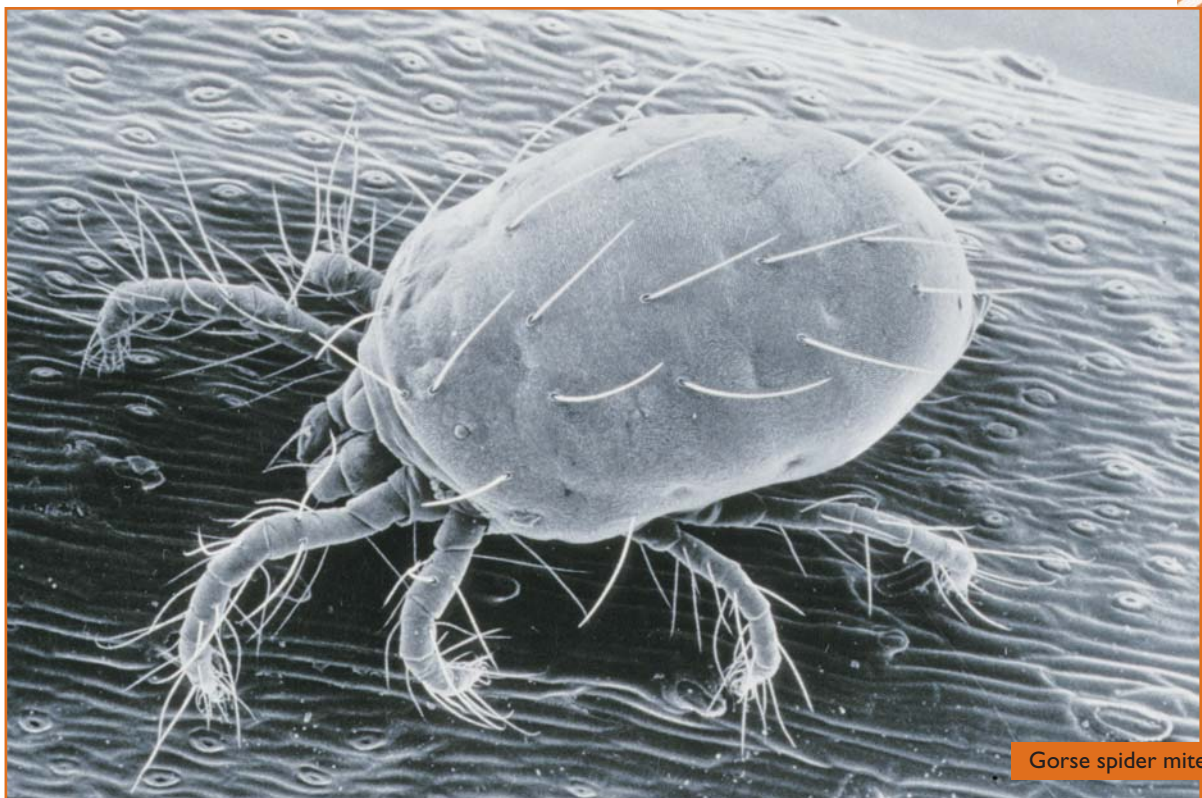


GORSE

Ulex europaeus

Fabaceae



Gorse spider mite

Six biological control agents have been released to attack gorse. The gorse seed weevil (*Exapion ulicis*) and gorse pod moth (*Cydia succedana*) feed on the seeds. The gorse spider mite (*Tetranychus lintearius*), gorse thrips (*Sericothrips staphylinus*), gorse soft shoot moth (*Agonopterix ulicetella*), and the gorse colonial hard shoot moth (*Pempelia genistella*) feed on the foliage. Until all these agents are widespread and have had a chance to build up to damaging levels we will not know what collective impact these agents will have on gorse.