



New Zealand

# GARDEN BIRD SURVEY

# Tweet, tweet – making our birds count!

The journey so far and coming up... the 2020 survey

# Bringing together people & biodiversity research



- Birds as environmental indicators
- Monitoring urban biodiversity
- Engaging New Zealanders
- Providing learning experiences
- Connection to nature

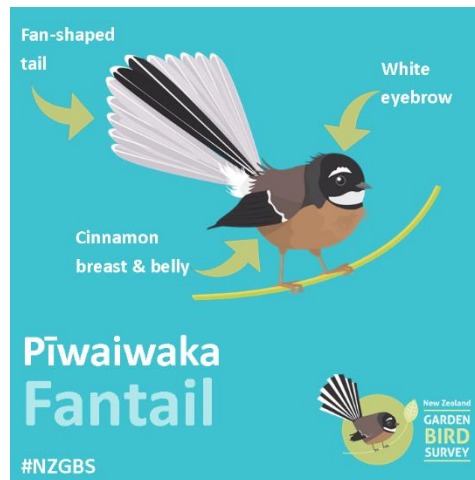
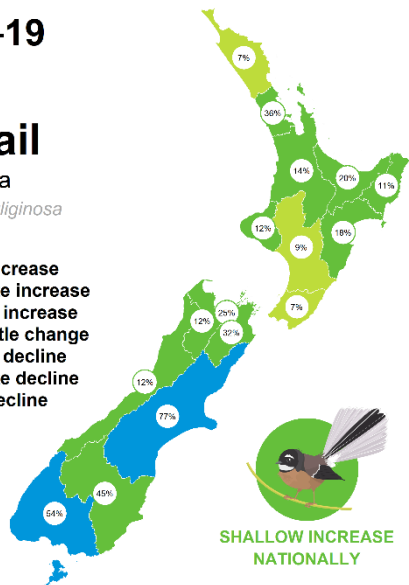
2009–19

## Fantail

Pīwaiwaka

*Rhipidura fuliginosa*

- Rapid increase
- Moderate increase
- Shallow increase
- No or little change
- Shallow decline
- Moderate decline
- Rapid decline



MacLeod 2019 <https://datastore.landcareresearch.co.nz/dataset/bird-identification-tips>

Rodriguez & MacLeod 2019 <https://datastore.landcareresearch.co.nz/dataset/bird-masks>

More than  
**50,000**  
surveys  
completed  
since 2007

**39,155**  
garden surveys  
nationwide  
since 2007

**THANK YOU**  
to all our volunteer  
bird counters!

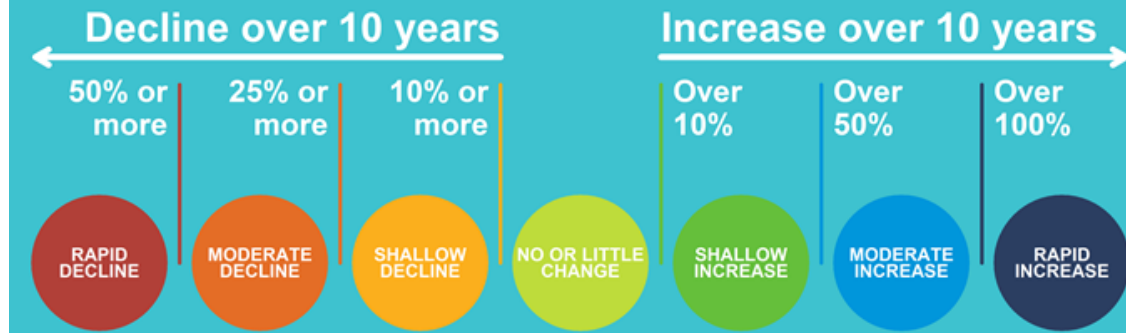


# Smart analysis techniques



- % change in bird counts – 14 common species
- Accounting for:
  - # of gardens at each spatial scale
  - Urban vs. rural setting
  - Birds fed or not
  - Repeated measures over time

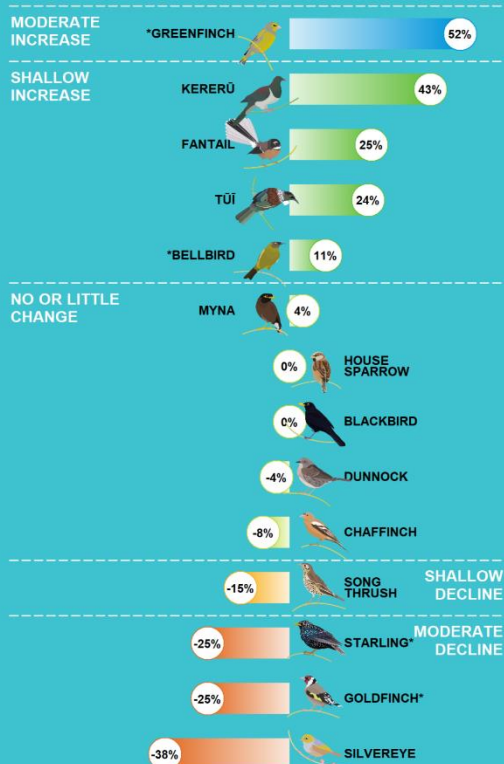
## Drawing attention to changes in counts of potential concern or interest



## NATIONAL PICTURE

### How have garden bird counts changed?

2009–19



2014–19



\* Based on available data, evidence for these species' estimates is weak.  
Data source: 35,786 and 19,912 garden surveys nationwide for 2009–19 and 2014–19.

# Regional trends – tūī



## How have garden bird counts changed across regions?

2009–19

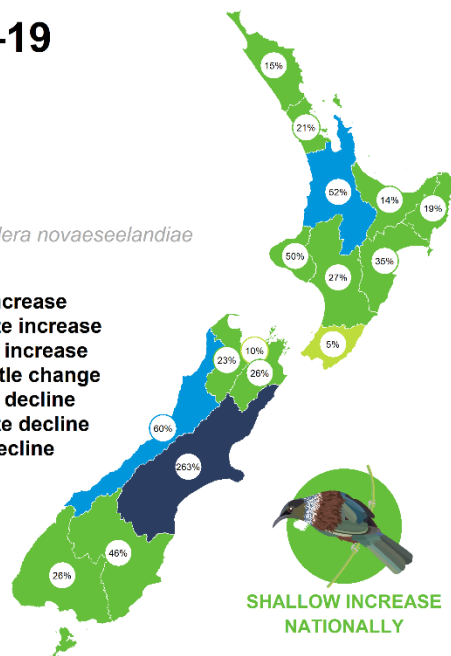
2014–19

**Tūī**

Kōkō

*Prosthemadera novaeseelandiae*

- Rapid increase
- Moderate increase
- Shallow increase
- No or little change
- Shallow decline
- Moderate decline
- Rapid decline



DATA SOURCE: 35,786 and 19,912 garden surveys for 2009–19 and 2014–19.

# Regional trends – tauhou



Manaaki Whenua  
Landcare Research



## How have garden bird counts changed across regions?

### 2009–19

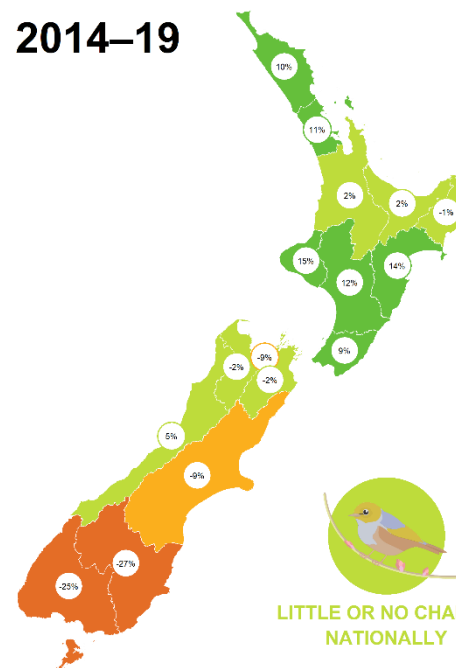
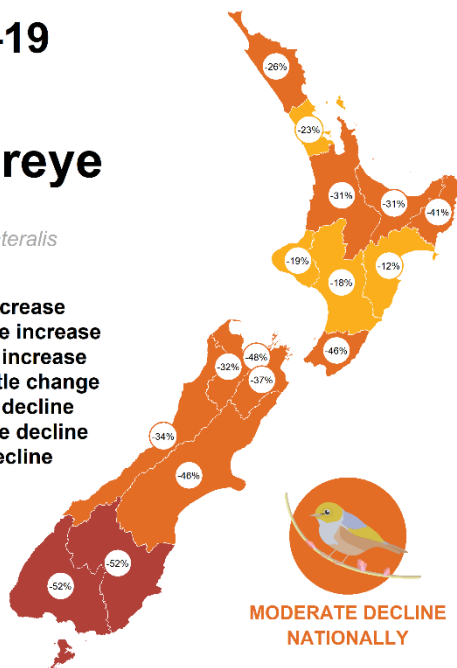
### 2014–19

## Silvereye

Tauhou

*Zosterops lateralis*

- Rapid increase
- Moderate increase
- Shallow increase
- No or little change
- Shallow decline
- Moderate decline
- Rapid decline



DATA SOURCE: 35,786 and 19,912 garden surveys for 2009–19 and 2014–19.





# Participation & engagement



**'Always good fun looking out for birds, they bring us great joy'**

**'Great fun, and always surprising'**

**'It's a fantastic way to feel involved in a bigger collective and meaningfully involved (without too much hassle or needing to join anything)'**

**'A meaningful way to involve all ages of family and friends for their ongoing awareness of birds in our neighbourhood'**

**'It's such an enjoyable experience - enforced but focused resting!'**

**'Slow down and just observe and listen to nature'**

**'Invigorated by being outside with nature'**

**'It was very peaceful to do'**

**Auckland Council**



Te Kaunihera o Tāmaki Makaurau

**Sustainable Business Council**



wbcscd Global Network Partner

**Auckland ZOO**



WELLINGTON

**Zoo**



**NIWA**

Taihoro Nukurangi



**ethique**

**Christchurch City Council**



**The Green Effect Trust**  
Te Roopu Kakariki



**SCION**  
FORESTS | PRODUCTS | INNOVATION

**Plant & Food RESEARCH**  
RANGAHAU AHUMĀRA KAI



**PREDATOR FREE NZ**



**Sustainable Business Network**

**TARANAKI**

like no other



**New Zealand DEFENCE FORCE**  
Te Opae Kaitiaki O Aotearoa



**Enviroschools**



**NZASE**

**TOITŪ**

ENVIROCARE

**BANKS PENINSULA CONSERVATION TRUST**



**KERERŪ DISCOVERY**

**Clutha**



**SCOUTS**  
New Zealand



**Priority One Tauranga Moana**

**Christchurch City Council**



**Libraries**



Newshub.



THE PRESS



Wellington City Council

Our Partners



# Taking part is easy

1. Select your garden, park, or school
2. Choose ONE day from June 27 - July 5
3. Look and listen for birds for ONE hour
4. Record the HIGHEST number of a bird species observed at one time
5. Submit your survey results online at [gardenbirdsurvey.landcareresearch.co.nz](https://gardenbirdsurvey.landcareresearch.co.nz)





**What are you  
doing to help  
make our birds  
count in 2020?**



# Help make our birds count

27 June – 5 July 2020

[gardenbirdsurvey.landcareresearch.co.nz](https://gardenbirdsurvey.landcareresearch.co.nz)

