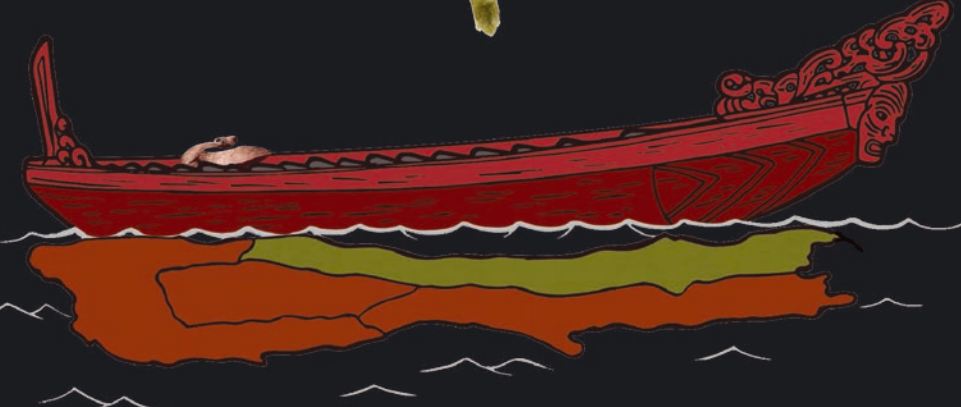


Puka Whakamārama o te Pepe Nui Te Rauawa



Te Takeka mai o te Pepe
I piki ake a Tāne, te Atua o te kahere, ki kā Raki Tūhāhā, kia toro atu ki tōhona tuakana a Rēhua. Nā Rēhua he ahi tunu kai, he hue hoki i tonu. Ko tā Tāne, 'He aha tā tāua kai e te tuakana?' Ka rūrūa e Rēhua tōhona upoko kia taka atu kia rua kā kōkō i ōhona makawe. Tūmeke atu a Tāne, kihai ia i te piraki kai i kā manu tapu nō te upoko o tōhona tuakana. Ka uia kē e ia, 'Me whakahoki ēnei manu ki a Papatūānuku?' I whakaae a Rēhua, ā, ko tā Rēhua ka noho kā manu ki kā rākau, ka kai i kā hua o te kahere. I a Rēhua e rūrū ana i tōhona upoko i puta atu hoki ētahi atu 'manu' o Rēhua, arā a Pepe, a Tātarakihī, a Pihareika, a Kēkerewai. Ko ēnei pēpeke ko tapaina ko 'Kā Manu a Rēhua', ā, he manu e puta mai i te raumati.

Kā Whetū
Ko te kōrero o pepe ko kawea e te kāhui whetū o Rēhua te mātāmua o Raki rāua ko Papa. Ko ia te whetū whero, te ariki o kā whetū.
Wairua Takata
Ko ō te whakaaro Māori ko te wairua o rātou ko wehe ki te pō, ko hoki mai ki te ao marama hai pepe.
He mea whakahirahira te pepe ki te rereka rauropi (biodiversity) o Aotearoa
He whānau rahi te Lepidoptera, arā ko kā pepe me kā pūrerehua. Ko rātou te tuatoru o kā pēpeke katoa i Aotearoa. 1750 nui ake kā momo pepe kua tapaina. E ai ki kā kaipūtaiao kia 300 anō kāore anō kia huraina.

Ka hou ki te whenua, he tūkōukou; ka puta ki te raki he pepe

He motūbake te Pepe
86% o kā pepe i Aotearoa he mea taketake (endemic). Nō konei ake, mā tātou e tiaki.
He aha i hira ai te pepe?
He wāhi nui ki kā pepe ki te rauropi (ecosystem) ko rātou te pū o te tukutuku kai matatini. He kaiota (herbivore) te anuhe i kā ōtaota taketake.

He whakaiaiai (pollinator)
whakahirahira te pepe. He nui nei kā ōtaota taketake ka whakaiaiaia e te pepe. Ka mahi tēnei mahi nui i te pō i a te marea e moe ana, nā reira ka whakarapaina e tātou te mahi rakatira o te pepe. He tino kai te pepe mā kā pēpeke me kā manu taketake. Heoi anō he kai mātua hoki ki kā riha rāwaho pērā i te kiore ititi me te kiore.

He riha hoki te pepe
Ko Hihue (te Pepe Kūmara, *Agrius convolvuli*) tētahi riha nui i kā mārā Kūmara. He nui hoki kā whakatauki mō te āwhato me te nui o tāna mahi kai.

He riha rāwaho nō inātata nei ko te pepe codling (*Cydia pomonella*) i kawea mai i Uropi, ā, ka kaika kā āporo, kā pea, kā wōronati me ētahi atu hua rākau.
He manihoko te pepe i tāhana kai i kā pūeru ko tuia i te whītau māori pērā i te wūru, i te mōhenu me te huruhuru. Me te mea nei tokoiti noa kā momo pepe e kai pūeru ana. He māmā te whakatika, me tuku atu kā pūeru ki te pātaka makariri kia rua pea kā wā.

Puka Whakamārama o te Pepe Nui
Ko kā pepe nui, kā pepe māori anake nō tēnei wāhi taiao ki tēnei pānui. Ki te kitea e koe tētahi pepe kāore i roto i te pānui nei, he mea puiaki pea, he mea noho hōrapa pea ehara nō tēnei wāhi taiao, he pepe ririki pea, he mea hou pea.

Te āwhato kai paeka



Mā te pūtaiao tātou e mārāmā i te urupare o te rauropi ki kā momo mahika whenua, ki te whakawerataka o te ao me te kaha whiti o kā rama

Me mōhio tātou i ō tātou rawa kia taea ai te tiaki tika

Mā te mōhio ka tipu te whakamānawa ki te rerehua, ki te tapu o tōhona iho matua

"Ka puta te pepetuna i te pō, ka puta ki te wero tuna"
Tangiwai Rewi

Me te upoko tūkōukou

Me hopu te pepe?
Ka puta te pepe i te pō nā reira kāore te nuika e mōhio ana e hia, kai te aha rānei kā pepe. Me te whakarapa tonu, ekari me kohi kā pepe kia tūtohu.

Te hua o te rarauka aroka whānui?
Mā te whakamahi i te momo mahaka kotahi (arā tē Mahaka Pepe Heath) ka inehia kā rarauka i ahu mai i kā wāhi katoa, i te hurika wā hoki. Mā te rarauka aroka whānui ka tiakina tahi ai tātou te pepe. Mehemea ka heke kā nama ka tere kitea e mātou, ā, ka whakatauria rautaki kia maimoatia ai kā pepe.

He aha te hua o te rarauka whakatauine?
Mā te tātai i ia pepe o tētahi momo pepe ka kohi pāroko anō atu i te rāraki ikoa noa. Ko tēnei pāroko, ko te rarauka whakatauine. Mā te huhua o te pāroko ka kitea he panonitaka i te wā, i te wāhi rānei.

He aha me mātāi ai kā pepe?
He kākara māpua te pepe. He nui kā momo pepe e whai mahi ana, e whai wāhi ana i te rauropi. He honoka anō tō te pepe ki ērā atu momo koiora (arā, ōtaota, manu, momo riha rāwaho, ērā atu pēpeke).

I hikaina te ahi titi, engari i whakapoapoa kē i te pepe – Te Whiti o Rongomai

Mēnā he panonitaka i te rauropi ko kā pepe tētahi o kā koiora tuatahi ka rakona te kōtoitoi. He tohu pai o te panonitaka ki tō rātou rauropi.
Kuputaka
Lepidoptera: Pepe, Pūrerehua
Taketake/Endemic: Nō tērā wāhi ake
Rauropi/Ecosystem: Ko te taiao me ōhona āhuataka katoa
Tukutuku kai: Ka kai a wai i a wai
Kaiota: Kararehe kai ōtaota anake
Huna/Nocturnal: Ka mahi i te pō
Hapori/Community: Kā momo koiora nō tētahi takiwā

1. He momo pepe hou ka whakaāhuaria i Hoare, R.J.B. e whakatā ana. *Noctuidae* (Insecta: Lepidoptera: Noctuidae) 1: *Austrarmathes*, *Cosmodes*, *Proteuxoa*, *Physetica*. Ao kararehe Aotearoa. Kāore anō kia tapaina i tēnei pānui

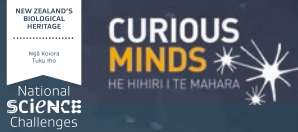
2. He uaua te tautohu i te *Wiseana mimica*, *W. jocosu*, *W. cervinata* me te *W. fuliginosa* mai i te *W. copularis* nō te whakaāhua noa; tirohia 'Hepialidae' nā J.S. Dugdale (vol. 30 of *Fauna of New Zealand*) kia tika tō tautohu, kia kitea hoki he kōrero.

3. He uaua te tautohu i te momo *Aoraria* nō te whakaāhua noa; tirohia 'Hepialidae' nā J.S. Dugdale (vol. 30 of *Fauna of New Zealand*) kia tika tō tautohu.

Mā raro nei he wāhi āwhina anō
www.landcareresearch.co.nz/mothnet
Email: MothNetOtago@gmail.com
@MothNetNZ
MothNetNZ
www.naturewatch.org.nz/
Entomological Society of New Zealand:
www.ento.org.nz

Kā mihi
Kā tuhika, te kiko me te haka o te pānui nā Dr Barbara J Anderson, rātou ko Komene Cassidy, ko Victoria Campbell, ko Dr Robert Hoare, ko Tiahuia Kawe-Small, ko Tahu MacKenzie, ko Dr Ralf Ohlemüller, ko Tangiwai Rewi, ko Dr Priscilla Wehi, ko Emma Burns. Nā Sean W Gilles kā whakaāhua. I kohia e Dr Robert Hoare, rātou ko Brian Patrick, ko te hapori pepe o Aotearoa te rāraki pepe. Nā Birgit Rhode kā whakaāhua mai i kā tauria i te NZAC, nā te pūtea tautoko mai i Terrestrial Freshwater Biodiversity Information System (TFBIS).

I huatia mai te pānui nei e Manaaki Whenua i te kaupapa, Ahi Pepe MothNet. Nā MBIE He Hihiri i Te Mahara me Ngā Koiora Tuku Iho te pūtea tautoko.
ISBN: 978-0-947525-24-8 (2017)

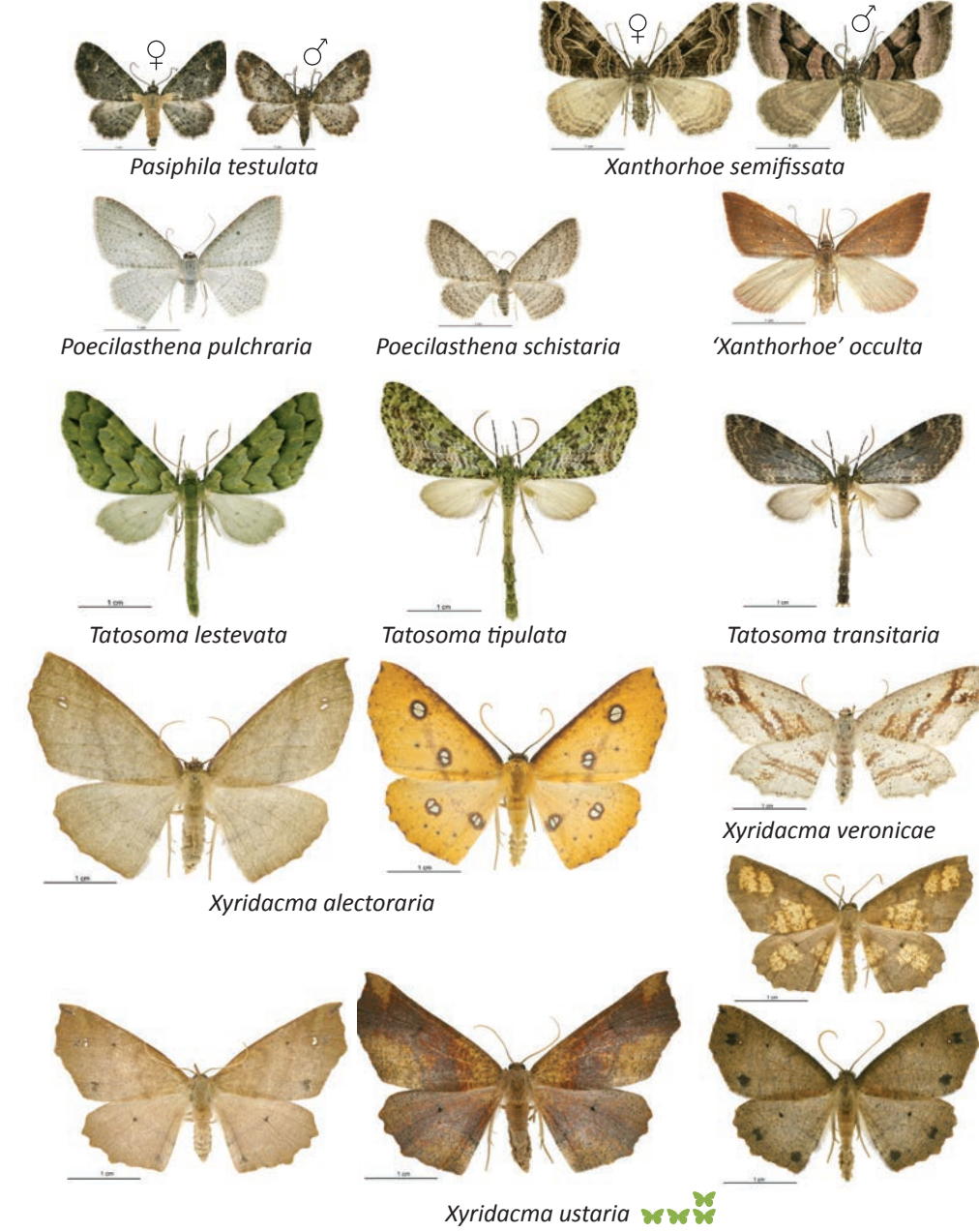
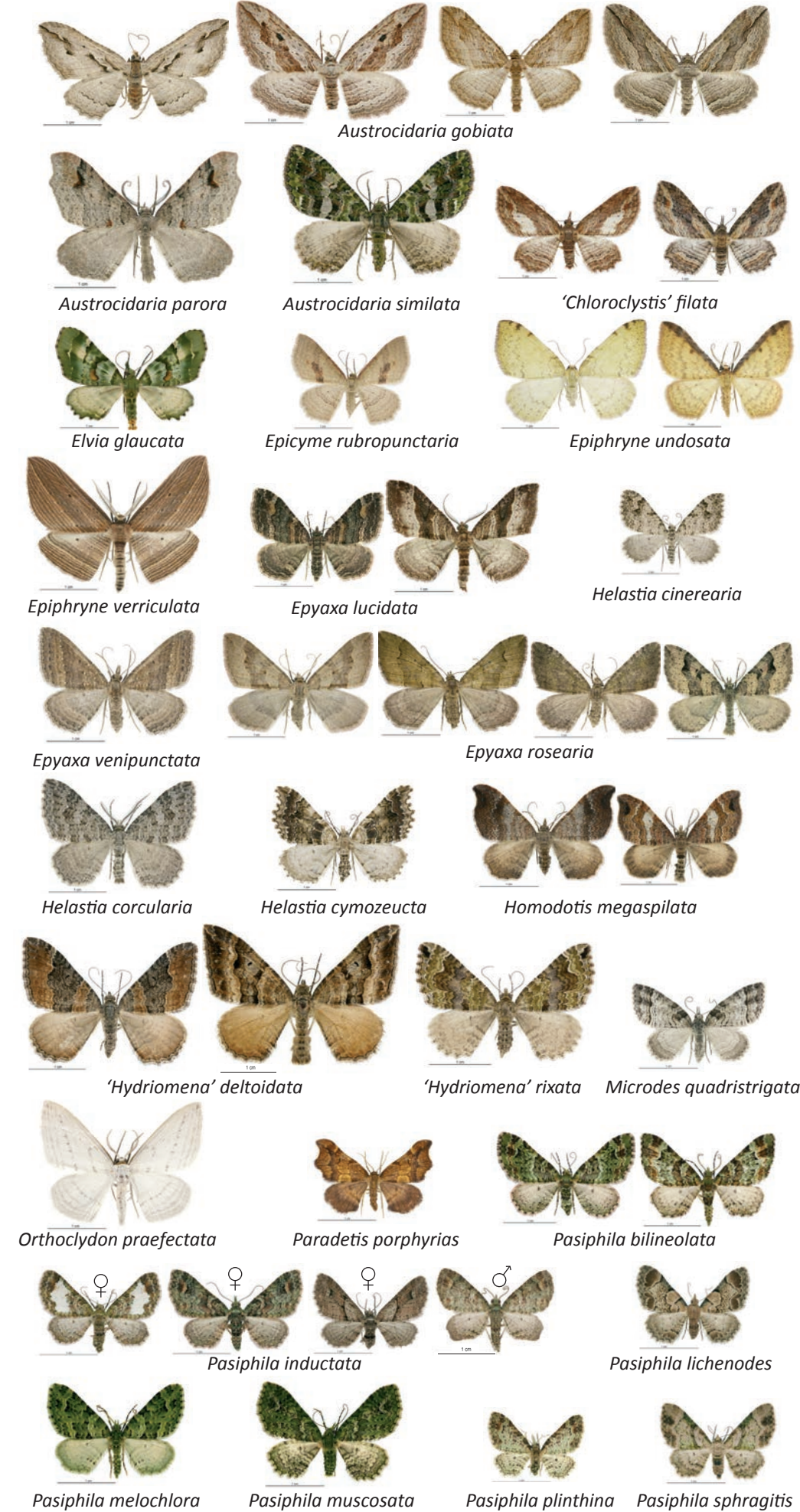
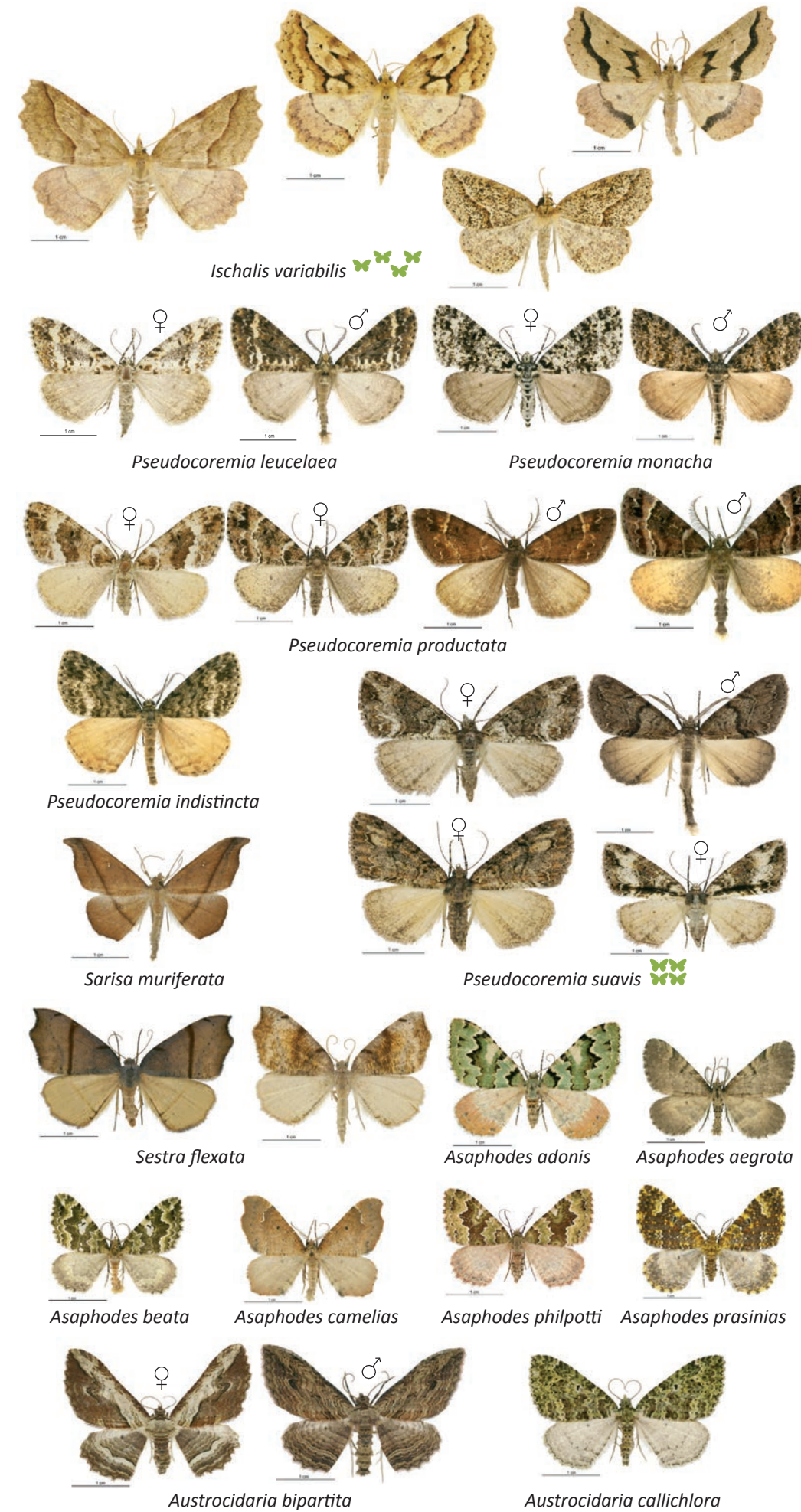
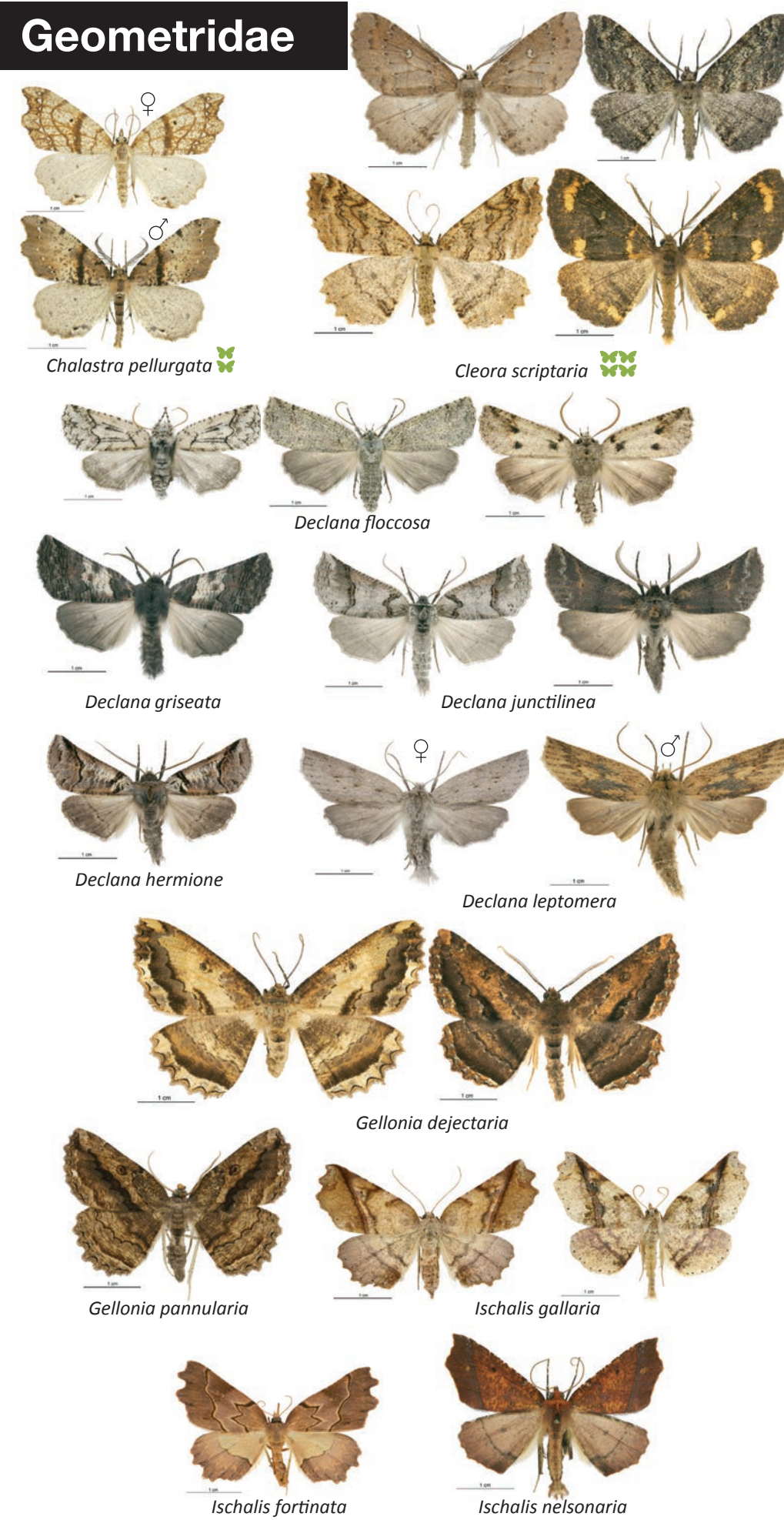


This work is licensed under a Creative Commons Attribution-NonCommercial-NoDerivs 3.0 New Zealand License. To view details of this license go to www.creativecommons.org/licenses/by-nc-nd/3.0/nz/

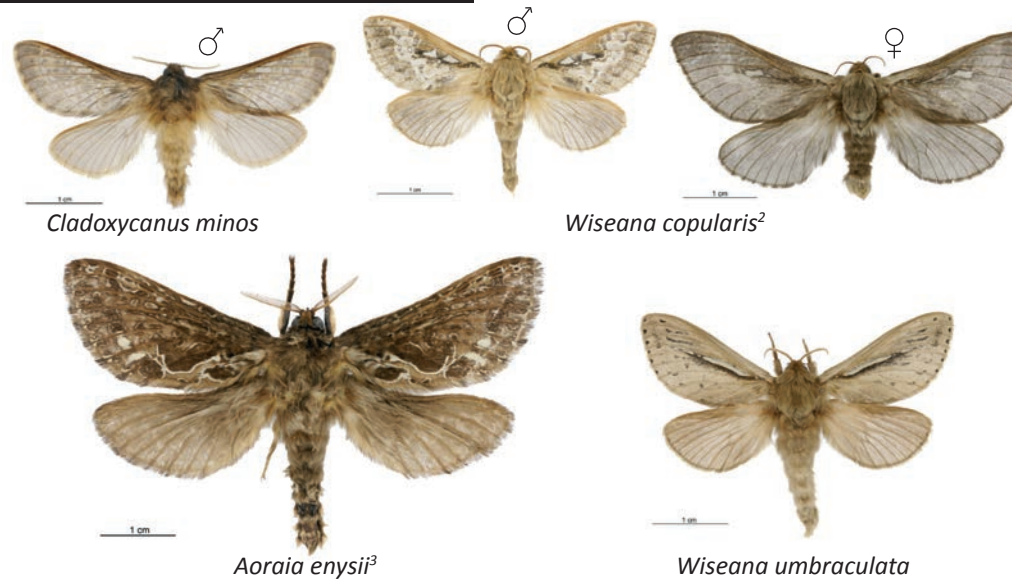
He iti hoki te mokoroa, nāna i kakati te Kahikatea



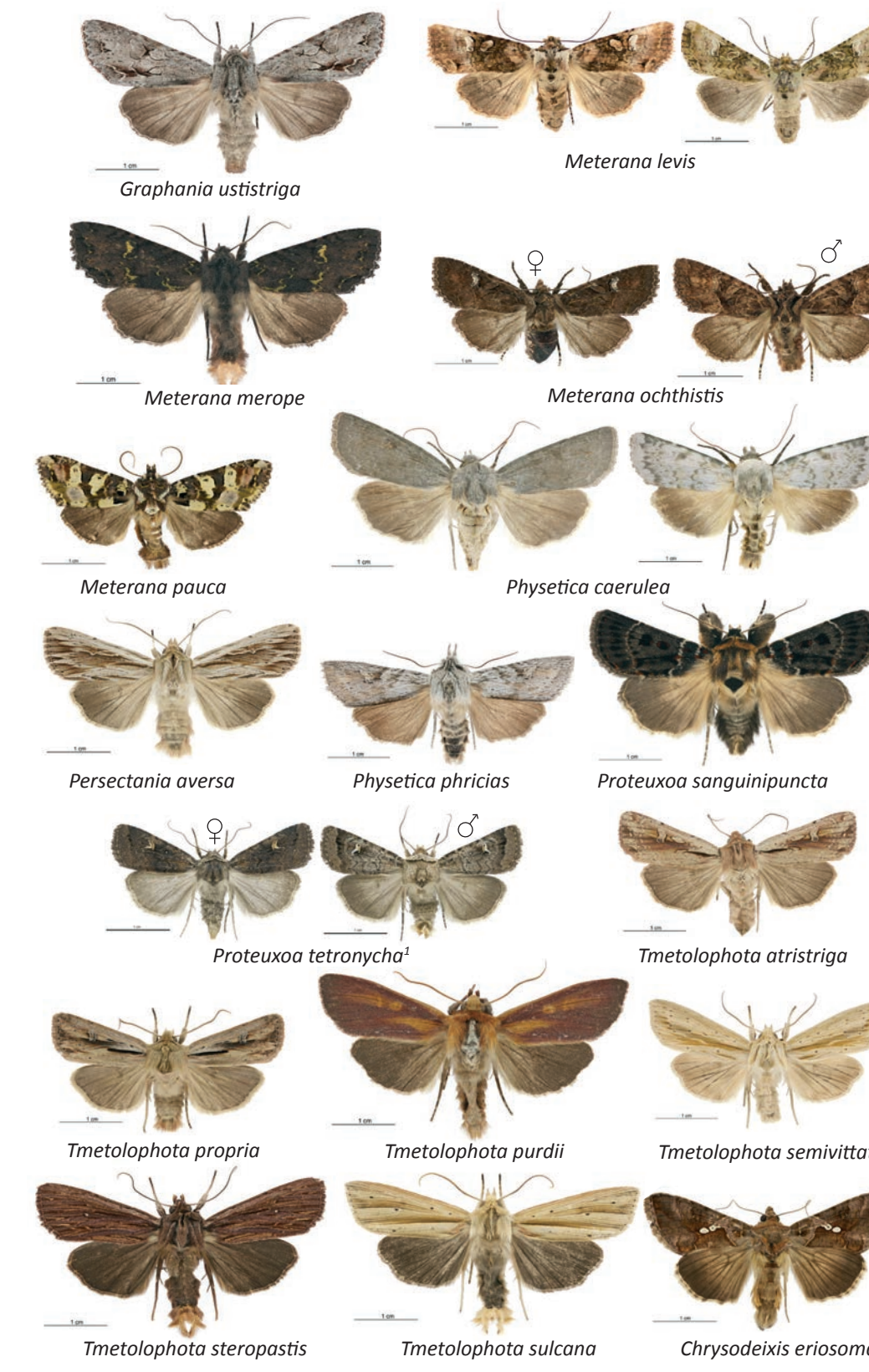
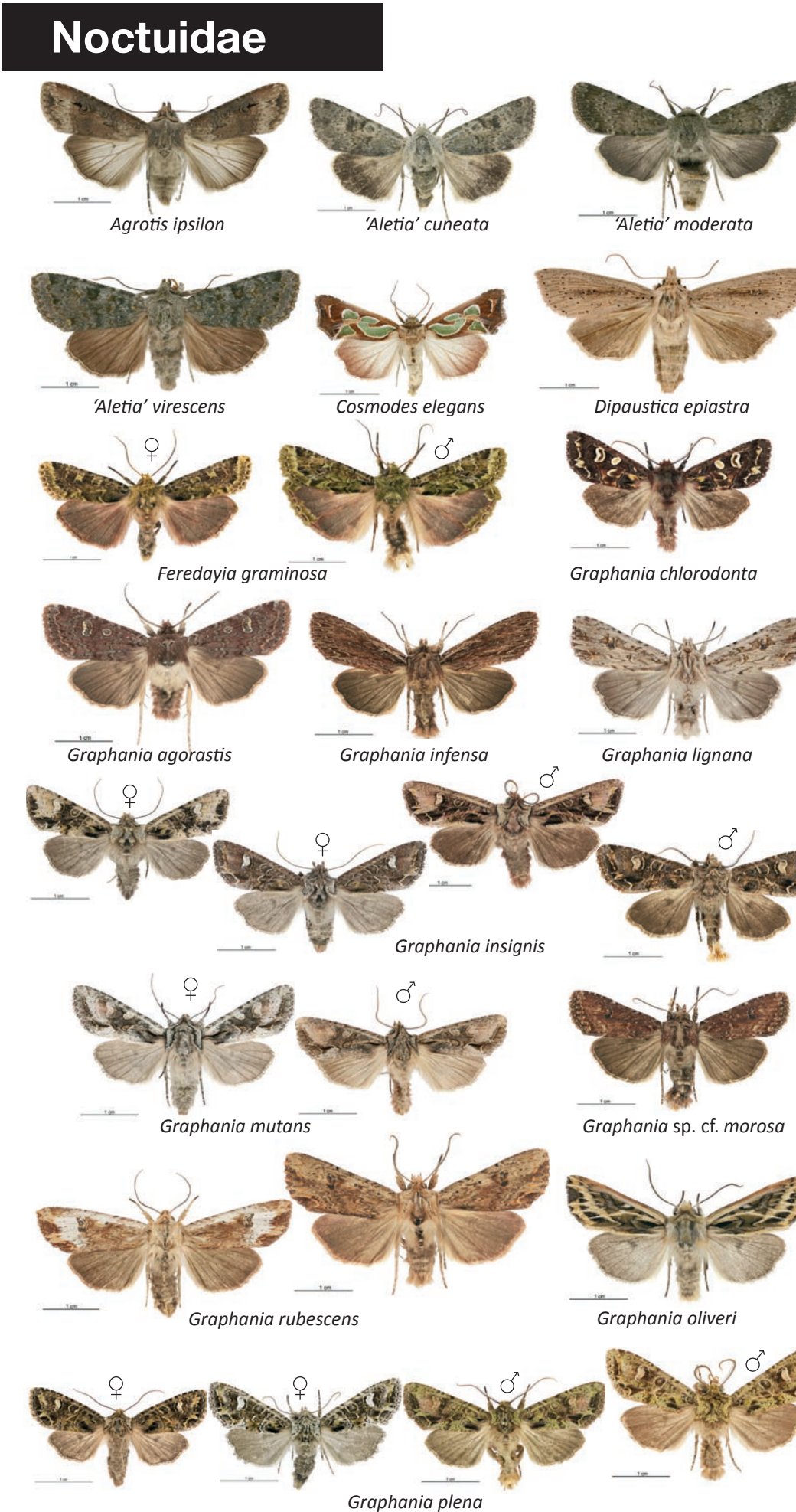
Geometridae



Hepialidae



Noctuidae



Erebidae

